

**ZOOMLION**

ZS5390RT  
Parts Manual

Jan 2022 Version A



## Foreword

Zoomlion appreciates your choice of our machine for your application. The Parts Manual must be read and understood in its entirety before operating the machine.

This manual introduces you the components and significant technical specs of scissor lifts in detail for working efficiency improving. Keep this manual properly at all times for looking up.

Do not attempt to maintain and repair the product without carefully reading and understanding the contents of this manual. If you have any questions or concerns, please call your local service engineer and we will provide you with timely and effective technical support. Zoomlion AWP Machinery Company does not take the consequence of wrong operation.

This manual should be considered a permanent part of your machine and should remain with the machine at all times.

The content is under intellectual property protection, permission is required for a copy or other application.

There might be some tiny differences in details between your machine and the upgraded one due to the continuous improving. For clarification, questions, or additional information regarding any portions of this manual, contact Zoomlion AWP Machinery.

Our company reserves the right to modify this manual as technical improvement without notice.

Thank you for your trust and support for Zoomlion products!

Zoomlion Intelligent Access Machinery Co.,Ltd.

## Contents

<b>Forward .....</b>	<b>I</b>
<b>Contents .....</b>	<b>II</b>
<b>SECTION 1 WORK PLATFORM ASSEMBLY .....</b>	<b>1-1</b>
ZS5390RT Series Pin .....	1-1
ZS5390RT Series Accessory .....	1-3
<b>SECTION 2 CHASSIS .....</b>	<b>2-1</b>
ZS5390RT Outrigger Structure .....	2-1
ZS5390RT Front-wheel Steering .....	2-3
ZS5390RT Lateral Ladder.....	2-7
ZS5390RT Right Body.....	2-9
ZS5390RT Left Body.....	2-13
ZS5390RT Power System .....	2-15
ZS5390RT Hydraulic System .....	2-19
<b>SECTION 3 SCISSOR ARM .....</b>	<b>3-1</b>
ZS5390RT Series Scissor Arm Pin .....	3-1
ZS5390RT Scissor Arm Accessory .....	3-5
<b>SECTION 4 WORK PLATFORM .....</b>	<b>4-1</b>
ZS5390RT Platform .....	4-1
ZS5390RT Platform Gate.....	4-5
ZS5390RT Platform Pulley .....	4-7
ZS5390RT Extension Deck.....	4-9
<b>SECTION 5 DECAL.....</b>	<b>5-1</b>
ZS5390RT Series Decal Installation .....	5-1

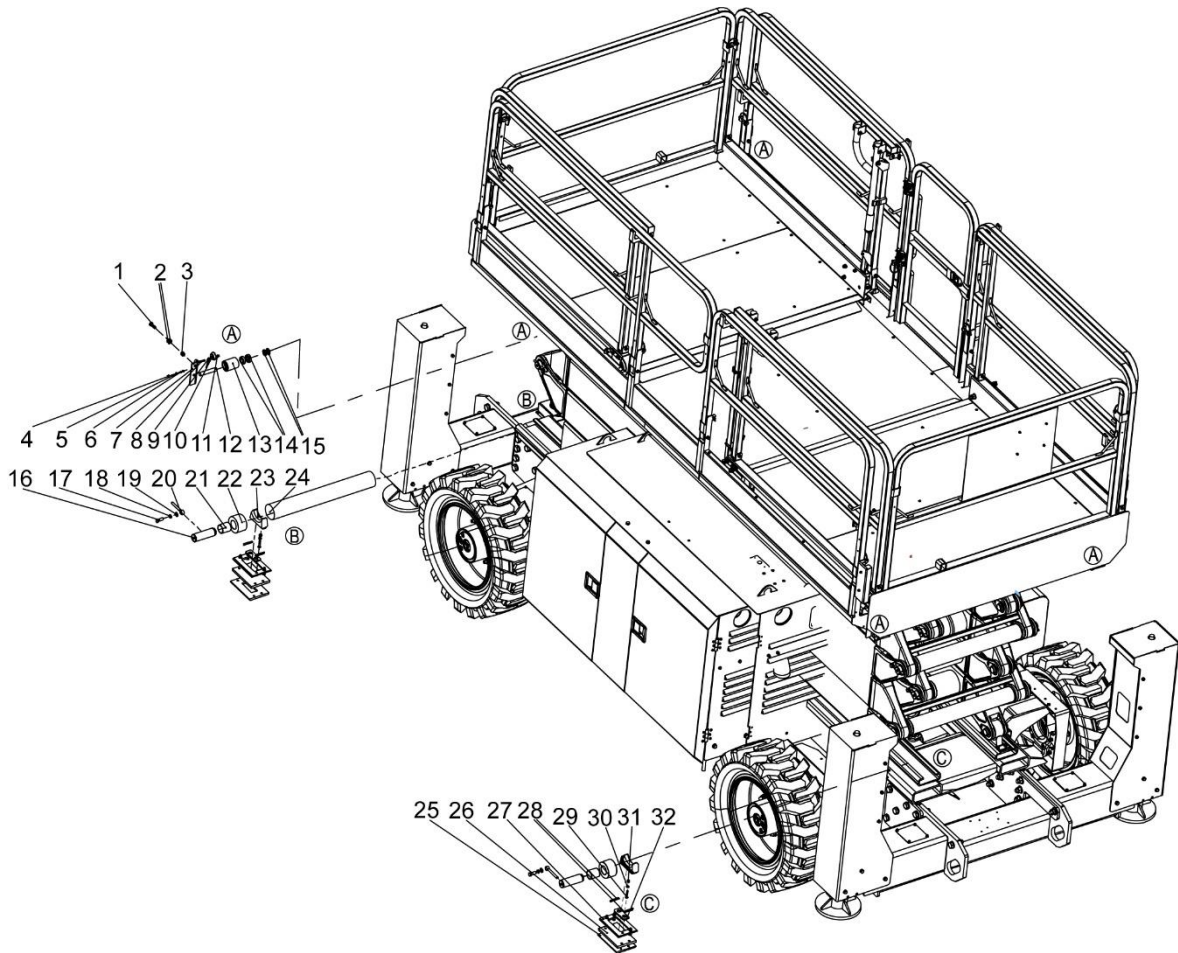
# **ZOOMLION**

## **Parts Manual**

### **Section 1 Work Platform Assembly**



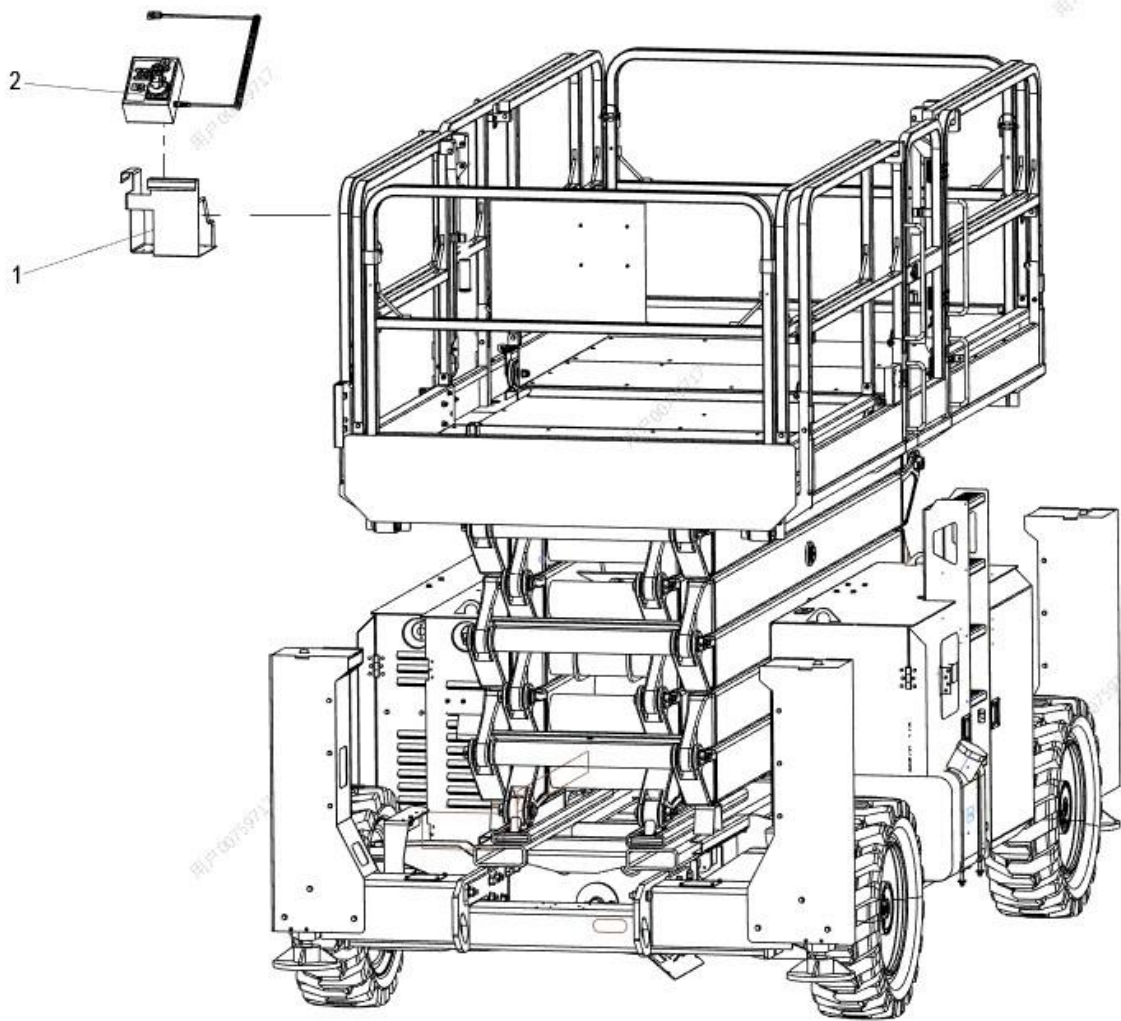
## ZS5390RT Series Pin



## ZS5390RT Series Pin

NO.	Material No.	Item and Spec	Units	Remark
1	1040001179	Bolt M12×35-8.8	48	GB/T5782-2000
2	1040300526	Washer 12	96	GB/T97.1-2002
3	1040200507	Nut M12-8	48	GB/T889.1-2000
4	1040200506	Nut M6-8	40	GB/T889.1-2000
5	1040300051	Washer 6	46	GB/T97.1-2002
6	1040100105	Screw M6×25-8.8	12	GB/T70.1-2000
7	00775800110001070	Roller mounting plate I	4	
8	1040100237	Screw M6×30-8.8	4	GB/T70.1-2000
9	00775800110002400	Stop pin	4	
10	00775800110002300	Nylon block	8	
11	1040200506	Nut M6-8	26	GB/T889.1-2000
12	00775800100001080	Pin II	4	
13	00775800100001070	Roller III	4	
14	1052500006	Bearing	20	GB/T 276-1994
15	00775800100001200	Gasket I	10	
16	00775800300001010	Axle I	6	
17	1040003970	Bolt M12×35-8.8	24	GB/T5783-2000
18	1040300054	Washer 12	24	GB/T93-1987
19	1040300526	Washer 12	96	GB/T97.1-2002
20	00773400200001070	Stop pin	24	
21	1054400367	Composite bush	24	
22	00775800302101030	Base	24	
23	00775800302101020	Rib plate	24	
24	00775800300201030	Connecting pipe	6	
25	00775800302001010	Lower sliding block	8	
26	00775800302101010	Baseplate	8	
27	00775800302001020	Upper sliding block	8	
28	00775800302101040	Connecting plate	48	
29	1040103310	Screw M8×45-8.8	96	GB/T70.3-2000
30	1040300066	Washer 8	24	GB/T97.1-2002
31	1040200503	Nut	24	GB/T889.1-2000
32	00775800302101050	Lower positioning plate	24	

## ZS5390RT Series Accessory





**ZS5390RT Series Accessory**

<b>NO.</b>	<b>Material No.</b>	<b>Item and Spec</b>	<b>Units</b>	<b>Remark</b>
1	00775806300410000	Platform control box	1	
2	1020104178	Platform control assembly	1	



# **ZOOMLION**

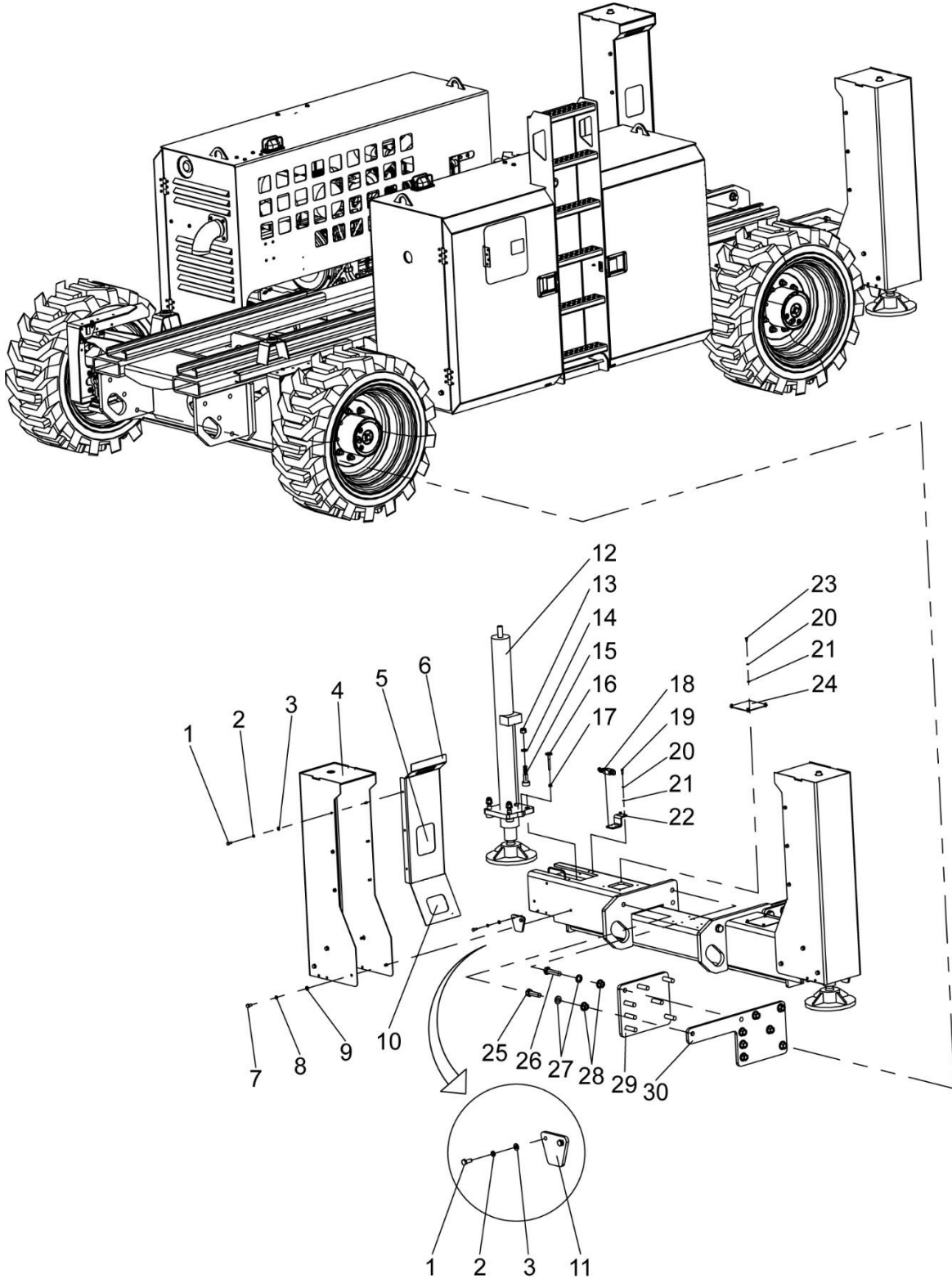
## **Parts Manual**

### **Section 2 Chassis**



## ZS5390RT Outrigger Structure

CHASSIS

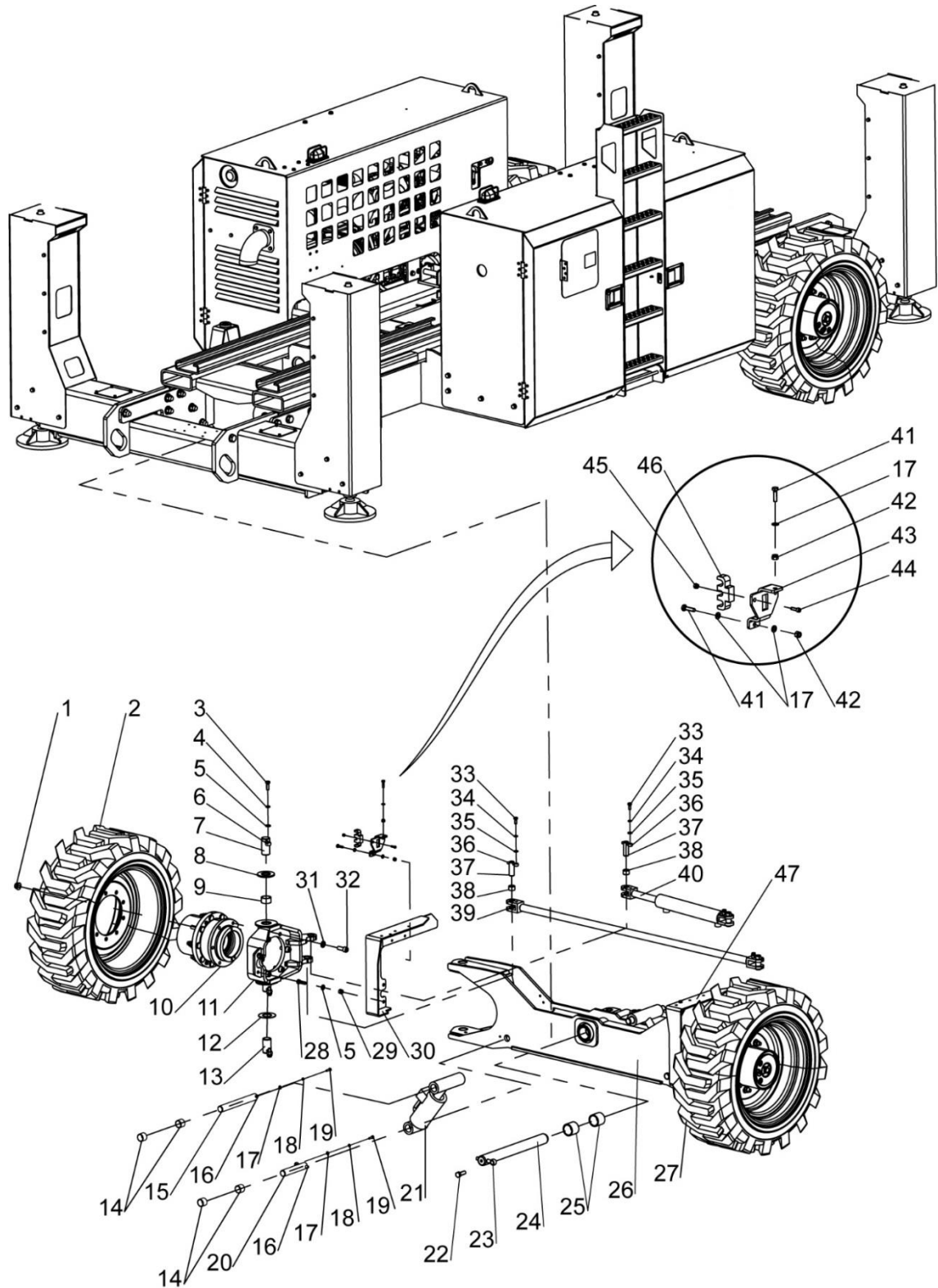


## ZS5390RT Outrigger Structure

NO.	Material No.	Item and Spec	Units	Remark
1	1040000267	Bolt M8×20-8.8	32	GB/T5783-2000
2	1040300063	Washer 8	32	GB/T93-1987
3	1040300066	Washer 8	32	GB/T97.1-2002
4	00775802801040000	Outrigger hood weld	4	
5	00775802801001070	Transparent veneer II	4	
6	00775802801080000	Seal plate weld	4	
7	1040000116	Bolt M10×20-8.8	24	GB/T5783-2016
8	1040300067	Washer 10	24	GB/T93-1987
9	1040300061	Washer 10	24	GB/T97.1-2002
10	00775802801001060	Transparent plate I	4	
11	00775802801001050	Limit plate	4	
12	1010201637	Outrigger cylinder	4	
13	1040200161	Nut M16-8	16	GB/T889-1986
14	1040300052	Washer 16	16	GB/T97.1-2002
15	00775802801001040	Cylinder mounting bolt	16	
16	00775802801060000	Stud	4	
17	1040200503	Nut M8-8	4	GB/T889.1-2000
18	1020521448	Limit switch	2	
19	1040100055	Bolt M6×20-8.8	8	GB/T70.1-2000
20	1040300062	Washer 6	24	GB/T93-1987
21	1040300051	Washer 6	24	GB/T97.1-2002
22	00775802801001030	Travel switch mounting plate	4	
23	1040100127	Bolt M6×12-8.8	16	GB/T70.1-2000
24	00775802801001020	Cover plate	4	
25	1040006219	Bolt M20×70-10.9S	4	GB/T1228-2006
26	1040006220	Bolt M20×85-10.9S	32	GB/T1228-2006
27	1040302502	Washer 20	36	GB/T1230-1991
28	1040202439	Nut M20-10	36	GB/T6177.1-2000
29	00775802800001010	Outrigger mounting plate	4	
30	00775802800001020	Outrigger mounting plate	4	

## ZS5390RT Front-wheel Steering

CHASSIS

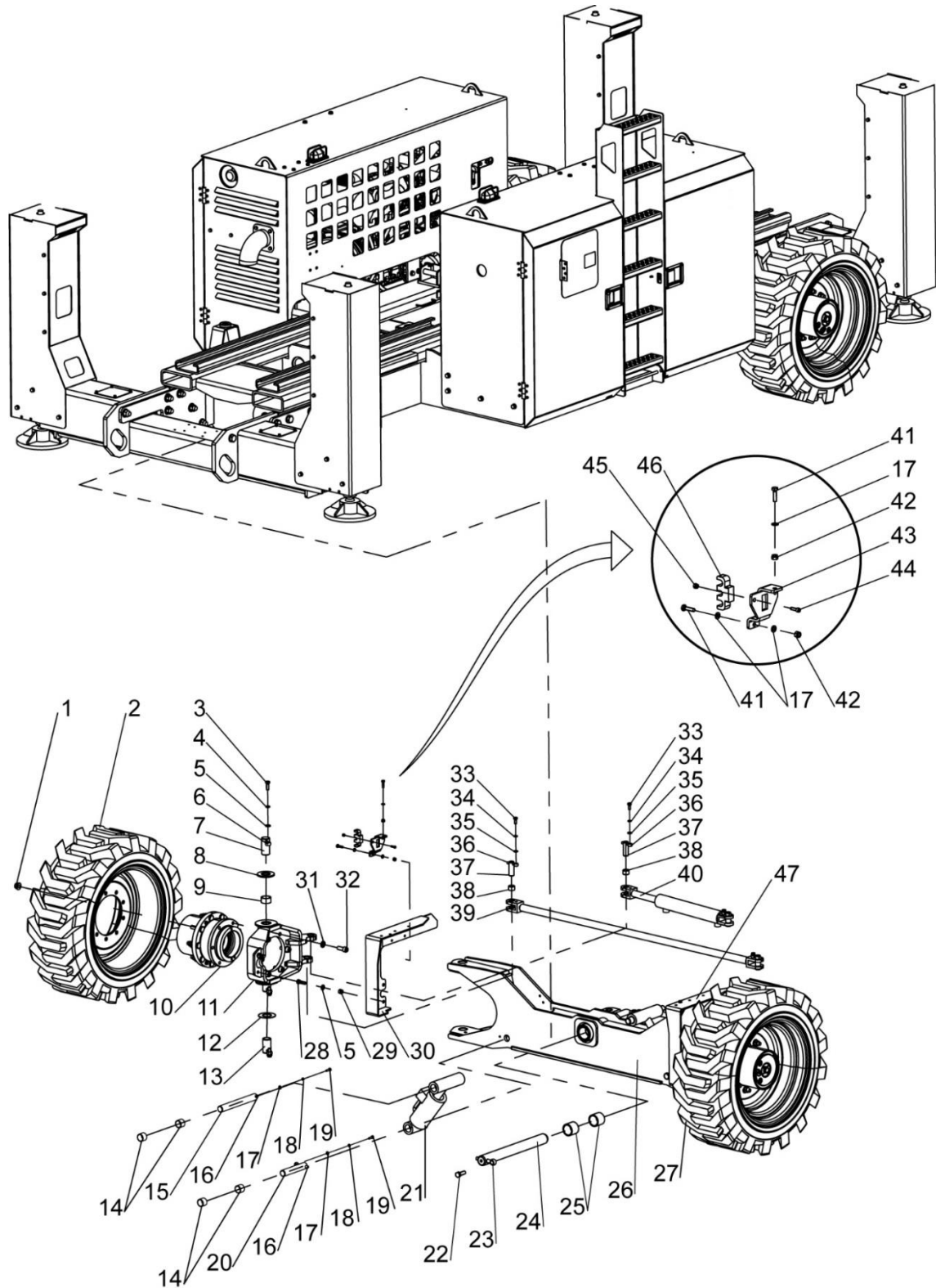


## ZS5390RT Front-wheel Steering

NO.	Material No.	Item and Spec	Units	Remark
1	1040202297	Nut M16×1.5-10	18	GB/T6177.2-2000
2	1030800838	Tire	1	
3	1040001179	Bolt M12×35-8.8	4	GB/T5782-2000
4	1040300054	Washer 12	4	GB/T93-1987
5	1040300526	Washer 12	8	GB/T97.1-2002
6	00773400200001070	Stop pin	4	
7	00775802800001280	Pin III	2	
8	00773402800001110	Steering knuckle gasket	2	
9	00773400200001020	Bearing	4	
10	1030202175	Reducer	2	
11	00775802800400000	Steering knuckle I	1	
12	00773402800001320	Steering knuckle upper gasket	2	
13	00775802800001460	Pin II	2	
14	1054400336	Composite bush	8	
15	00775802800001290	Floating cylinder connecting pin II	2	
16	00775600000001050	Articulated pin	4	
17	1040300066	Washer 8	14	GB/T97.1-2002
18	1040300063	Washer 8	8	GB/T93-1987
19	1040000288	Bolt M8×25-8.8	4	GB/T5783-2000
20	00775802800001270	Floating cylinder connecting pin	2	
21	1010201676	Floating cylinder	2	
22	1040006079	Bolt M16×45-8.8	1	GB/T5783-2000
23	00773400400001250	Stop pin	1	
24	00775802800001260	Floating bridge connecting pin	1	
25	00773402800001070	Bearing	2	

## ZS5390RT Front-wheel Steering

CHASSIS





## ZS5390RT Front-wheel Steering

NO.	Material No.	Item and Spec	Units	Remark
26	00775802800800000	Front axle welds	1	
27	1030800839	Tire	1	
28	1040000101	Bolt M12×40-8.8	4	GB/T5783-2016
29	1040200507	Nut M12-8	4	GB/T889.1-2000
30	00775802801700000	Tube support II	1	
31	1040302492	Washer 16	12	GB/T97.1-2002
32	1040101819	Screw M16×40-10.9	12	GB/T70.1-2000
33	1040000114	Bolt M10×25-8.8	6	GB/T5783-2000
34	1040300067	Washer 10	6	GB/T93-1987
35	1040300061	Washer 10	6	GB/T97.1-2002
36	00775802800001250	Stop pin	6	
37	00775802800001240	Pin I	6	
38	1054400340	Composite bush	6	
39	00775802804400000	Steering link	1	
40	1010201636	Steering cylinder	2	
41	1040000018	Bolt M8×30-8.8	4	GB/T5783-2000
42	1040200503	Nut M8-8	4	GB/T889.1-2000
43	00775802800001310	Tube pressing plate	2	
44	1040100055	Screw M6×20-8.8	2	GB/T70.1-2000
45	1040200506	Nut M6-8	2	GB/T889.1-2000
46	00775802800001470	Tube clamp	2	
47	00775802801600000	Tube support	1	

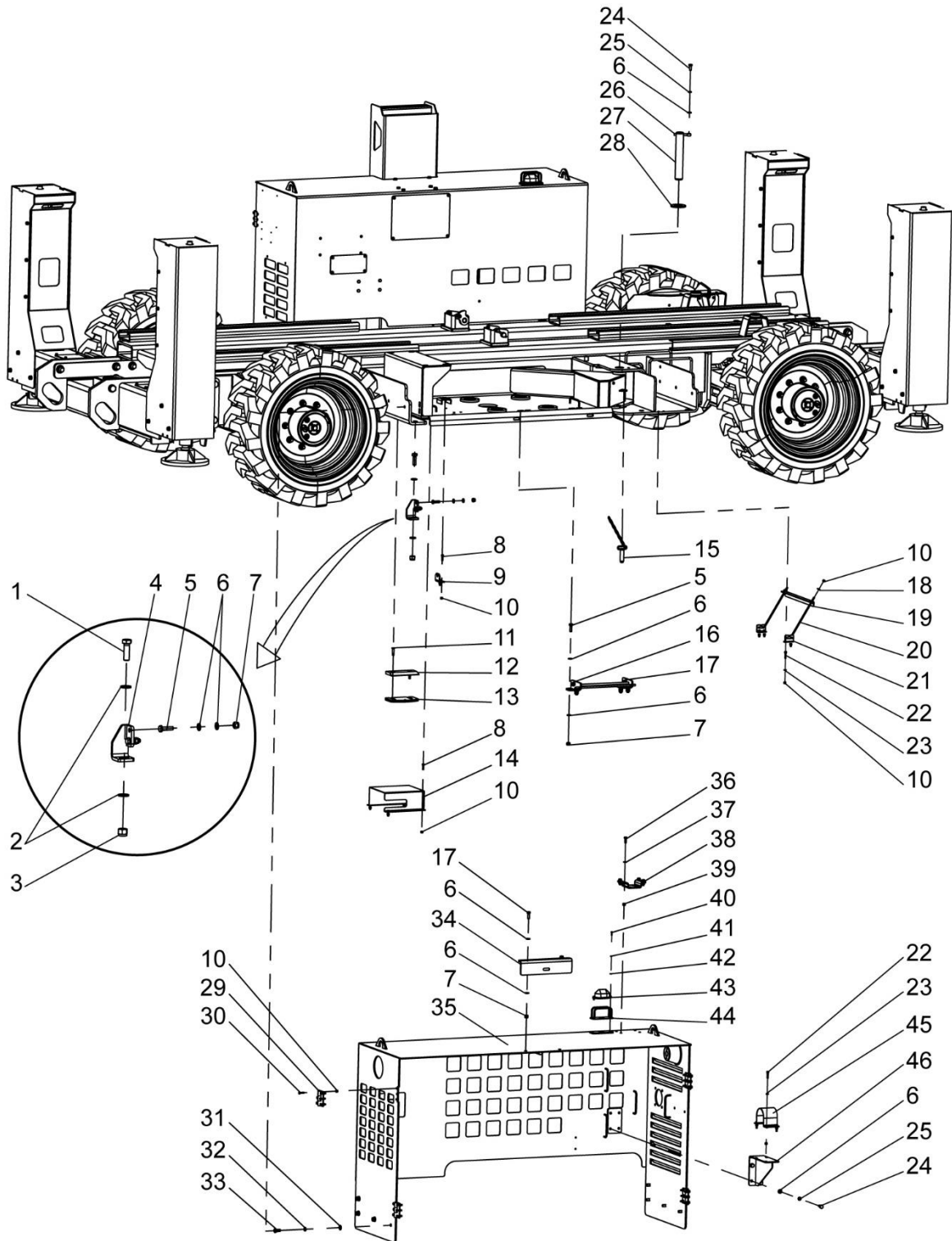


## ZS5390RT Lateral Ladder

NO.	Material No.	Item and Spec	Units	Remark
1	00775800300001190	Cushion	3	
2	00775802800001360	Level guard	1	
3	1040100127	Screw M6×12-8.8	4	GB/T70.1-2000
4	1040300062	Washer 6	4	GB/T93-1987
5	1040300051	Washer 6	12	GB/T97.1-2002
6	1040102341	Screw M5×12-8.8	3	GB/T70.1-2000
7	1040000682	Bolt M6×40-8.8	5	GB/T5783-2000
8	1021404523	Level	1	
9	00775802800001330	Level spring	3	
10	00775802800001320	Level mounting plate	1	
11	1040200161	Nut M16-8	1	GB/T889-1986
12	1040300247	Washer 16	2	GB/T96.1-2002
13	00775802803100000	Ladder	1	
14	1040006079	Bolt M16×45-8.8	1	GB/T5783-2000
15	1040300093	Washer 6	2	GB/T96.1-2002
16	00775802800001350	Door buffer ring	2	
17	1040200506	Nut M6-8	6	GB/T889.1-2000
18	1040200507	Nut M12-8	2	GB/T889.1-2000
19	1040001179	Bolt M12×35-8.8	2	GB/T5782-2000
20	1029903782	Screw M4×12	8	GB/T818-2000
21	1999905631	Hinge	1	
22	00775802800001380	Plate	1	
23	1040201772	Nut M4-A2-70	8	GB/T6170-2000
24	00771101103201020	Sponge bar	1	
25	1109800044	Tongue type lock	1	
26	00775802804200000	Left body cover	1	
27	1101000131	Panel lock	1	
28	1040101212	Screw M6×20-8.8	4	GB/T818-2000

## ZS5390RT Right Box

CHASSIS

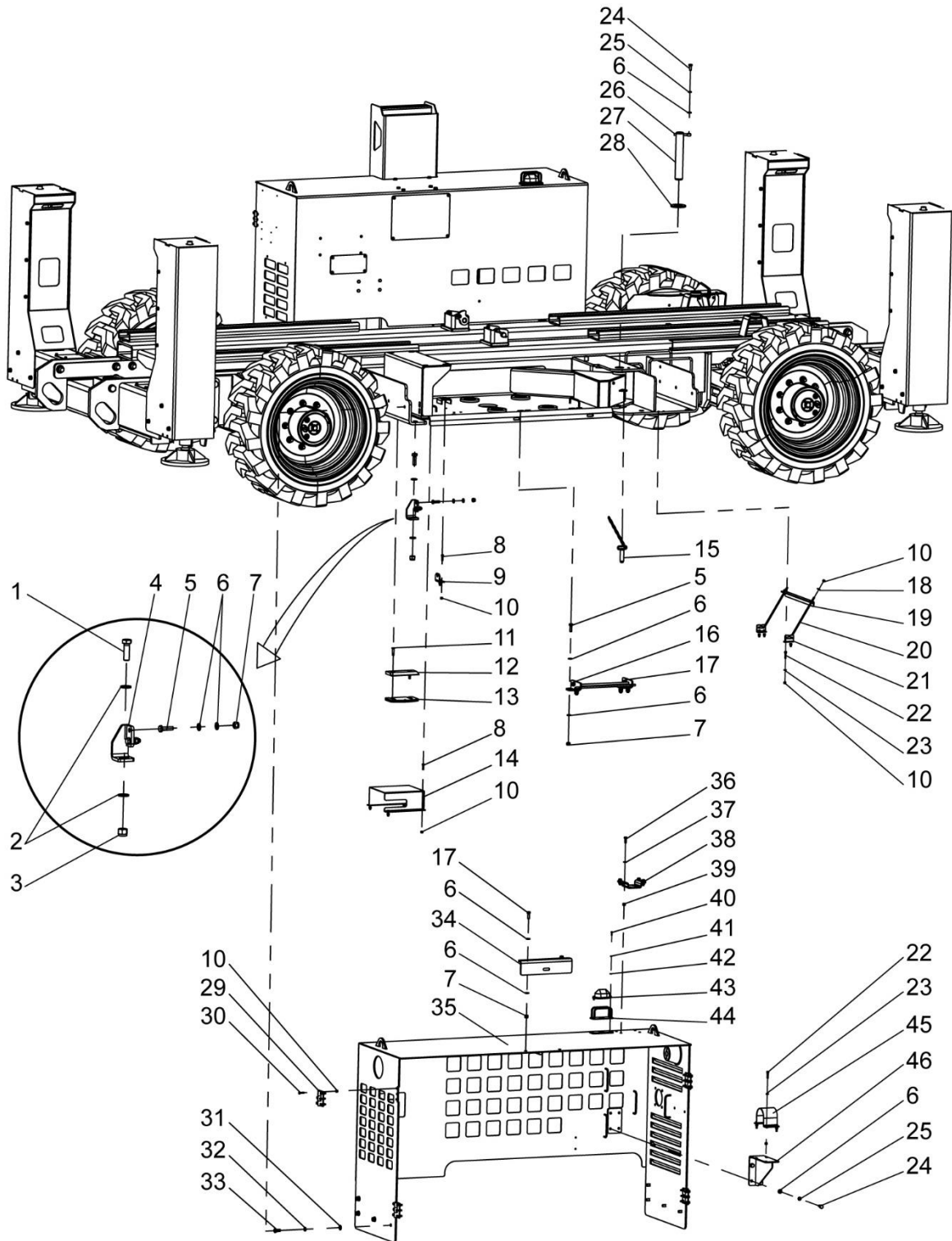


## ZS5390RT Right Body

NO.	Material No.	Item and Spec	Units	Remark
1	1040000198	Bolt M16×50-8.8	1	GB/T5783-2016
2	1040300052	Washer 16	2	GB/T97.1-2002
3	1040200161	Nut M16-8	1	GB/T889-1986
4	00775802803400000	Tray fixed plate	1	
5	1040001595	Bolt M10×35-8.8	6	GB/T5783-2000
6	1040300061	Washer 10	21	GB/T97.1-2002
7	1040200504	Nut M10-8	10	GB/T889.1-2000
8	1040100105	Screw M6×25-8.8	6	GB/T70.1-2000
9	00773400830201020	Baffle	1	
10	1040200506	M6-8	64	GB/T889.1-2000
11	1040102717	Screw M8×40-8.8	2	GB/T70.3-2000
12	00775802800001080	Tray block	1	
13	00775802800001150	Adjustable gasket	5	
14	00775802800001430	Motor cover plate	1	
15	00773400801400000	Tray plug pin	1	
16	00775802804800000	Intermediate plate mounting seat	1	
17	1040001680	Bolt M10×30-8.8	4	GB/T5783-2016
18	1040300093	Washer 6	2	GB/T96.1-2002
19	00775802800001160	Battery fixing plate	1	
20	00775802800001180	Battery fixing lever	2	
21	00775802800001170	Battery fixing bracket	2	
22	1040100237	Screw M6×30-8.8	8	GB/T70.1-2000
23	1040300051	Washer 6	8	GB/T97.1-2002
24	1040000114	Bolt M10×25-8.8	5	GB/T5783-2000
25	1040300067	Washer 10	5	GB/T93-1987

## ZS5390RT Right Body

CHASSIS

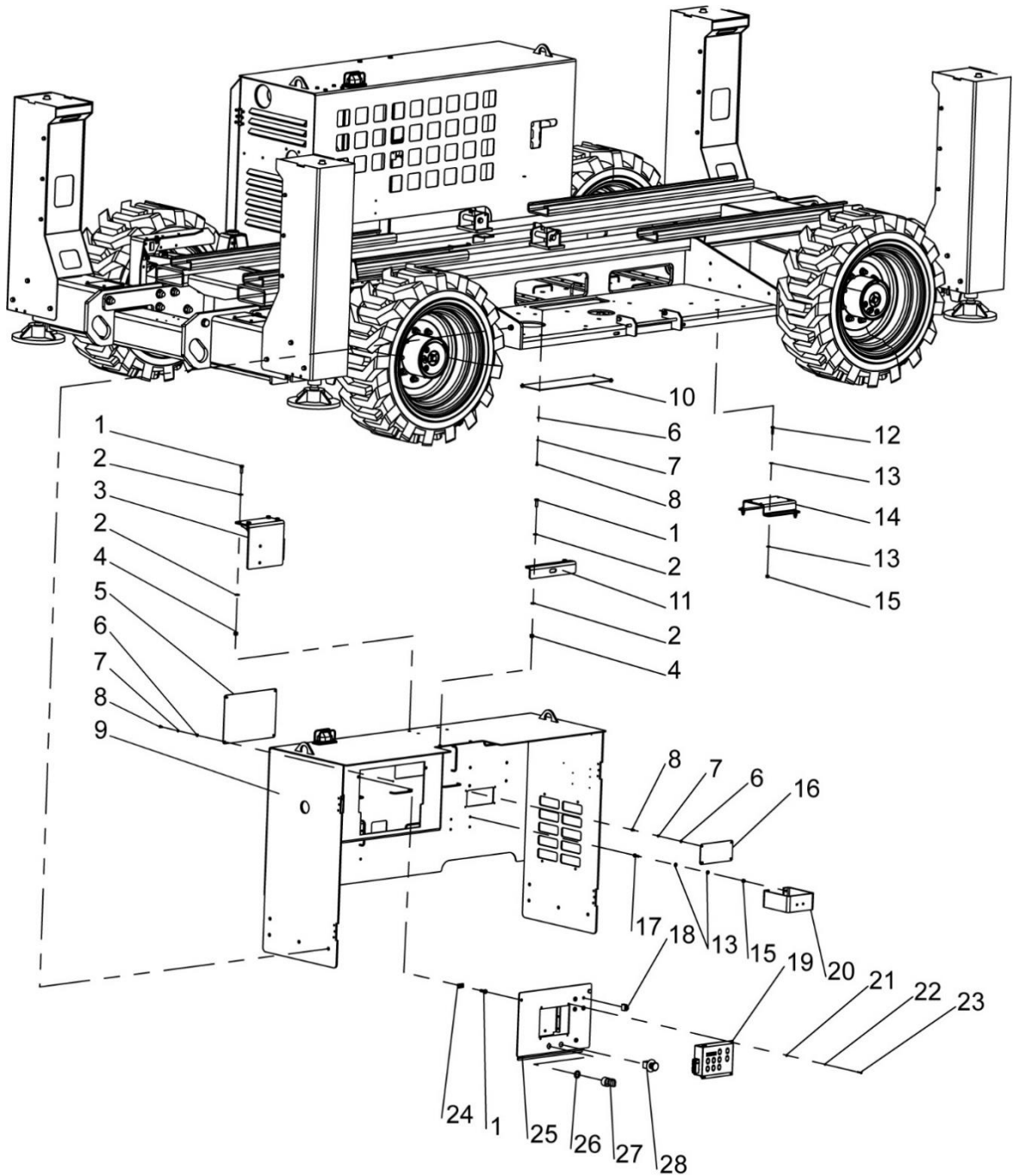


## ZS5390RT Right Body

NO.	Material No.	Item and Spec	Units	Remark
26	00773400300001200	Stop pin	1	
27	00775802800001420	Tray axis	1	
28	00775802800001030	Friction plate	1	
29	1101000162	Hinges	4	
30	1040000076	Bolt M6×25-8.8	24	GB/T5783-2000
31	1040300526	Washer 12	8	GB/T97.1-2002
32	1040300054	Washer 12	8	GB/T93-1987
33	1040000069	Bolt M12×25-8.8	8	GB/T5783-2016
34	00775802800001400	Upper fixed plate of frame II	1	
35	00775802801400000	Right body frame	1	
36	1040000288	Bolt M8×25-8.8	4	GB/T5783-2000
37	1040300066	Washer 8	4	GB/T97.1-2002
38	00775802800001410	Oil-filling filter support	1	
39	1040200503	Nut M8-8	4	GB/T889.1-2000
40	1040100618	Screw M4×16-8.8	4	GB/T818-2000
41	1040300044	Washer 4	4	GB/T93-1987
42	1040301697	Washer 4	4	GB/T97.1-2002
43	1020404906	LED Strobe light	2	
44	1029906206	Guard	2	
45	00775802800001190	Fixed plate on the outlet pipe	1	
46	00775802803200000	Outlet pipe bracket	1	

## ZS5390RT Left Body

CHASSIS



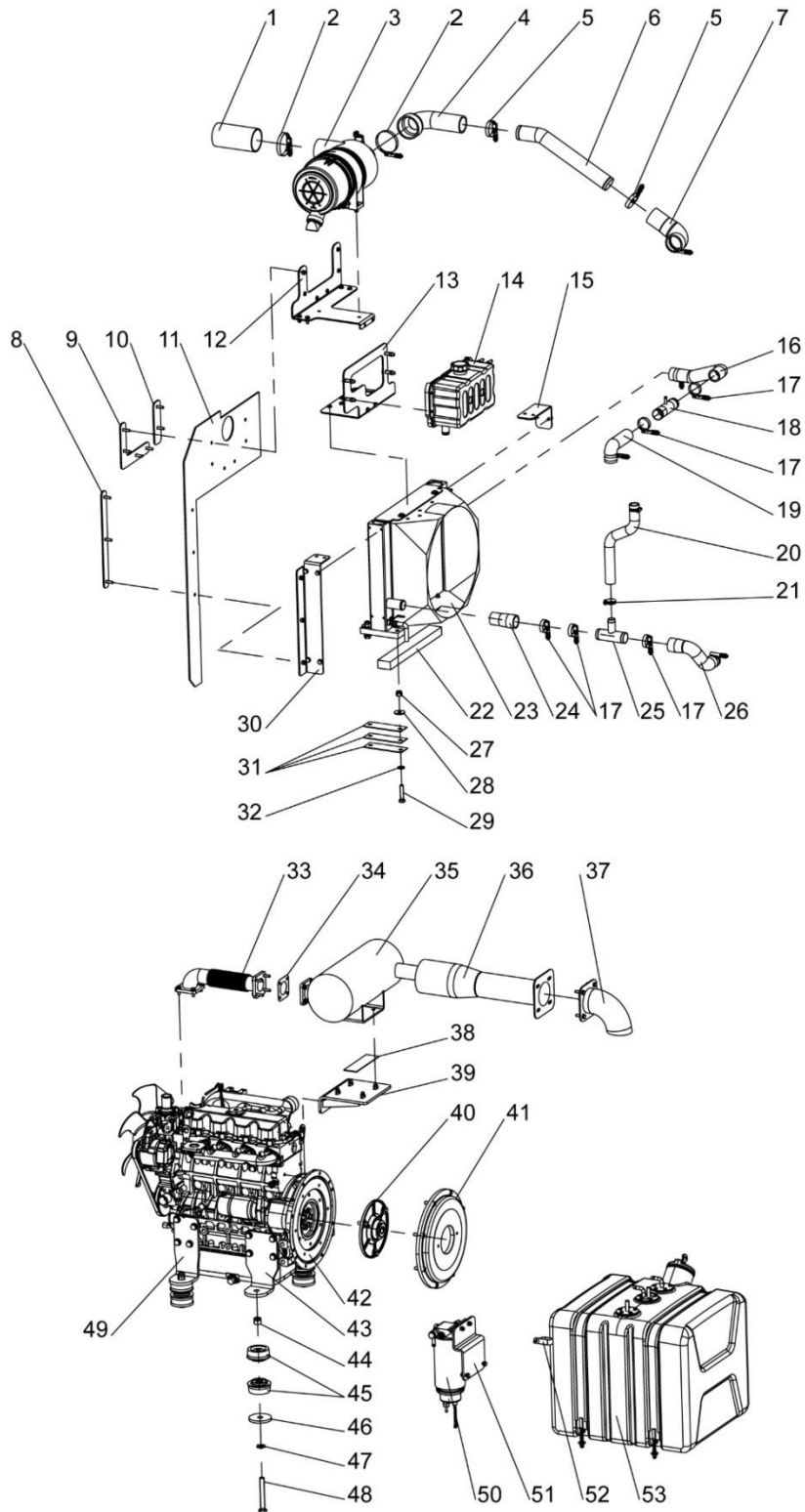


## ZS5390RT Left Body

NO.	Material No.	Item and Spec	Units	Remark
1	1040001680	Bolt M10×30-8.8	8	GB/T5783-2016
2	1040300061	Washer 10	12	GB/T97.1-2002
3	00775802803800000	Emergency pump bracket	1	
4	1040200504	Nut M10-8	6	GB/T889.1-2000
5	00775802800001370	Cover plate I	1	
6	1040300051	Washer 6	12	GB/T97.1-2002
7	1040300062	Washer 6	12	GB/T93-1987
8	1040000096	Bolt M6×12-8.8	12	GB/T5783-2000
9	00775802803600000	Left body frame	1	
10	00775802800001480	Lower cover plate of left body	1	
11	00775802800001140	Fixed plate on the outer frame	1	
12	1040000018	Bolt M8×30-8.8	8	GB/T5783-2000
13	1040300066	Washer 8	16	GB/T97.1-2002
14	00775802800001340	Walking valve mounting plate	1	
15	1040200503	Nut M8-8	8	GB/T889.1-2000
16	00775802800001490	Cover plate II	1	
17	1040000288	Bolt M8×25-8.8	4	GB/T5783-2000
18	1020304979	Breaker	5	
19	1020202167	Ground control assembly	1	
20	00775802800001210	Brake floating valve bracket	1	
21	1040301697	Washer 4	4	GB/T97.1-2002
22	1040300044	Washer 4	4	GB/T93-1987
23	1029804041	Screw M4×25-4.8	4	GB/T70.1-2000
24	1040201860	Nut M10	2	QC/T608-2011
25	00775802804000000	Control mounting plate	1	
26	00775606300201030	Key switch gasket	1	
27	1020520943	Key switch	1	
28	1020502039	Emergency stop button head	1	

## ZS5390RT Power System

CHASSIS

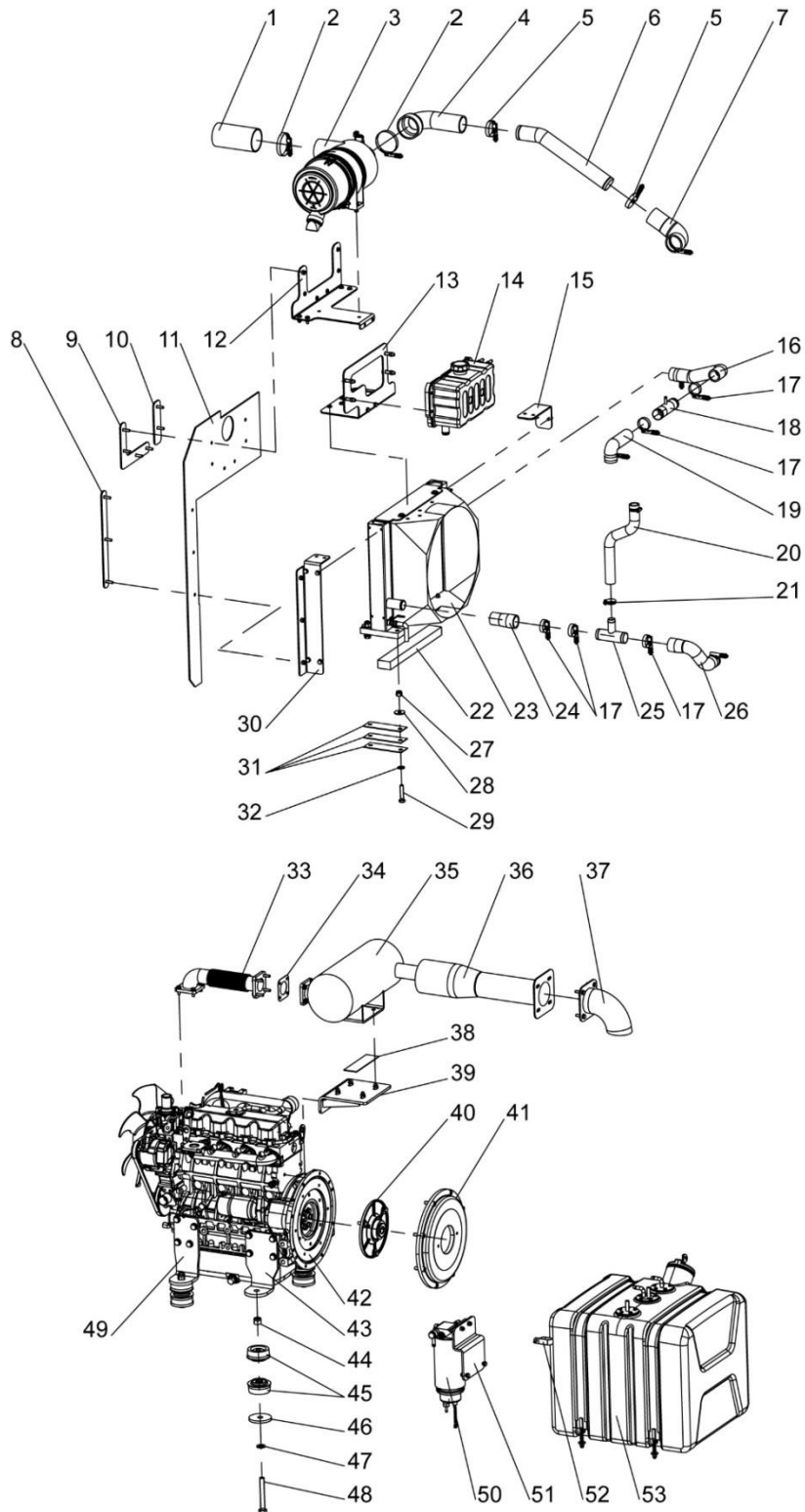


## ZS5390RT Power System

NO.	Material No.	Item and Spec	Units	Remark
1	00775807100801060	Intake hose	1	
2	1990202290	Spiral turbine vortex rod clamp	2	
3	1000100391	Air filter assembly	1	
4	00775807100801020	Intake pipe I	1	
5	1990202288	Spiral turbine vortex rod clamp	3	
6	00775807100801040	Intake steel pipe	1	
7	00775807100801030	Intake pipe II	1	
8	00775807100601140	Plate III	1	
9	00775807100601120	Plate I	1	
10	00775807100601080	Windshield	1	
11	00775807100601230	Mounting plate I	1	
12	00775807100601150	Plate IV	1	
13	00775807100601111	Water tank mounting plate	1	
14	1000300735	Expansion tank	1	
15	00775807100601160	Bending plate VI	1	
16	00775807100601190	Outlet pipe I	1	
17	1990202287	Spiral turbine vortex rod clamp	8	
18	00773407140601060	Joint I	1	
19	00775807100601180	Outlet pipe	1	
20	00775807100601201	Water supply pipe	1	
21	1990202282	Turbo rod clamp	2	
22	00773407100601130	Sponge bar	1	
23	1000200483	Radiator assembly	1	
24	00773407140601040	Backwater pipe I	1	
25	00773407140601070	Joint II	1	
26	00773407140601050	Backwater pipe II	1	
27	1040200170	Nut M12-8	4	GB/T889-1986
28	1040302821	Washer 12	4	GB/T96.1-2002
29	1040002262	Bolt M12×55-10.9	4	GB/T5783-2000
30	00775807100601070	Bending plate III	1	

## ZS5390RT Power System

CHASSIS

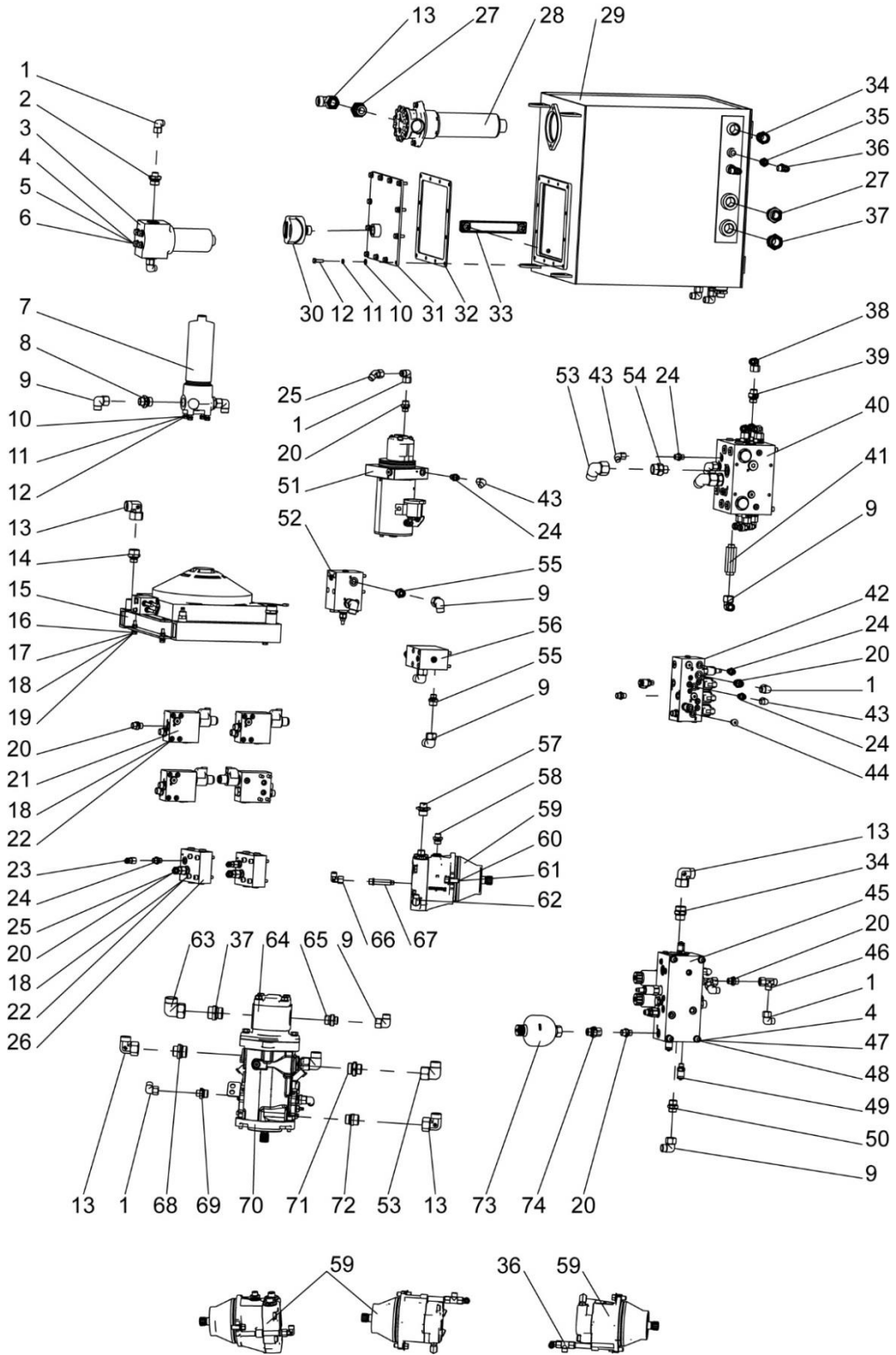


## ZS5390RT Power System

NO.	Material No.	Item and Spec	Units	Remark
31	00773407100601140	Pad plate	6	
32	1040302490	Washer 12	4	GB/T97.1-2002
33	00775807101001061	Exhaust pipe I	1	
34	00773407151001060	Seal gasket	1	
35	00775807101001010	Silencer	1	
36	00775807101001080	Exhaust pipe	1	
37	00775807101001070	Tail pipe	1	
38	00775807101001130	Thermal baffle	1	
39	00775807101010000	Support plate	1	
40	1009900968	Elastic coupling assembly	1	
41	00773407140201010	Coupling cover	1	
42	1000000867	Diesel oil engine	1	
43	00775807100201040	Bending plate IV	1	
44	1040200161	Nut M16-8	4	GB/T889-1986
45	1009900979	Engine damper	8	
46	00773407100201050	Pad plate	4	
47	1040302492	Washer 16	4	GB/T97.1-2002
48	1040003912	Bolt M16×120-10.9-DKL	4	GB/T5783-2000
49	00775807100201030	Bending plate III	1	
50	1009901074	Oil-water separator	1	
51	00775807100401260	Bending plate	1	
52	1990200692	Plastic coating tape	3	
53	00775807100401010	Fuel tank assembly	1	

## ZS5390RT Hydraulic System

CHASSIS

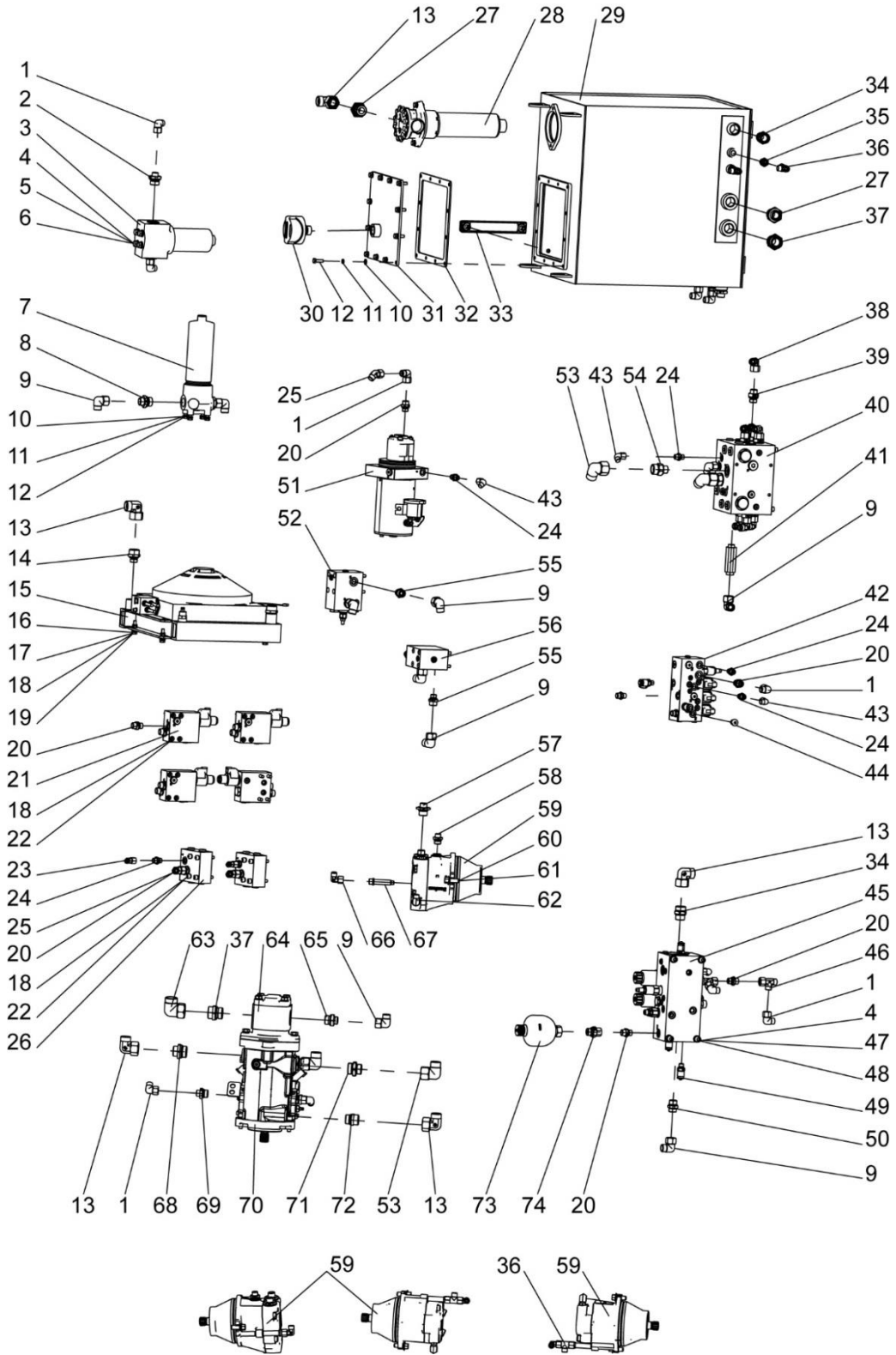


## ZS5390RT Hydraulic System

NO.	Material No.	Item and Spec	Units	Remark
1	1140101477	Right angle built-up joint M18×1.5	8	
2	1140207362	End straight coupling	2	
3	1010601369	Re-fill filter	1	
4	1040300061	Washer 10	8	GB/T97.1-2002
5	1040300067	Washer 10	4	GB/T93-1987
6	1040000116	Bolt M10×20-8.8	4	GB/T5783-2016
7	1010601137	High pressure filter	1	
8	1140101820	End straight coupling	2	
9	1140101478	Right angle built-up joint M22×1.5	9	
10	1040301515	Washer 8	18	GB/T97.1-2002
11	1040301510	Washer 8	18	GB/T93-1987
12	1040004519	Bolt M8×25-8.8	18	GB/T5783-2000
13	1140108904	Joint M30-M30	7	
14	1140105928	End straight coupling	2	
15	1010400309	Heat sink	1	
16	1040200503	Nut M8-8	4	GB/T889.1-2000
17	1040300066	Washer 8	4	GB/T97.1-2002
18	1040300063	Washer 8	28	GB/T93-1987
19	1040000689	Bolt M8×35-8.8	4	GB/T5782-2000
20	1140101462	End straight coupling G3/8/M18×1.5	15	
21	1010307105	Electromagnetic valve	4	
22	1040102034	Screw M8×60-10.9	24	GB/T70.1-2000
23	1140107801	Joint	2	
24	1140111237	End straight coupling	6	
25	1140113796	Combination joint	3	
26	1010307050	Floating balance valve	2	
27	1140111518	Joint	2	
28	1010601341	Return oil filter	1	
29	00775805200210000	Oil tank	1	
30	1010500340	Fuel tank air filter	1	

## ZS5390RT Hydraulic System

CHASSIS



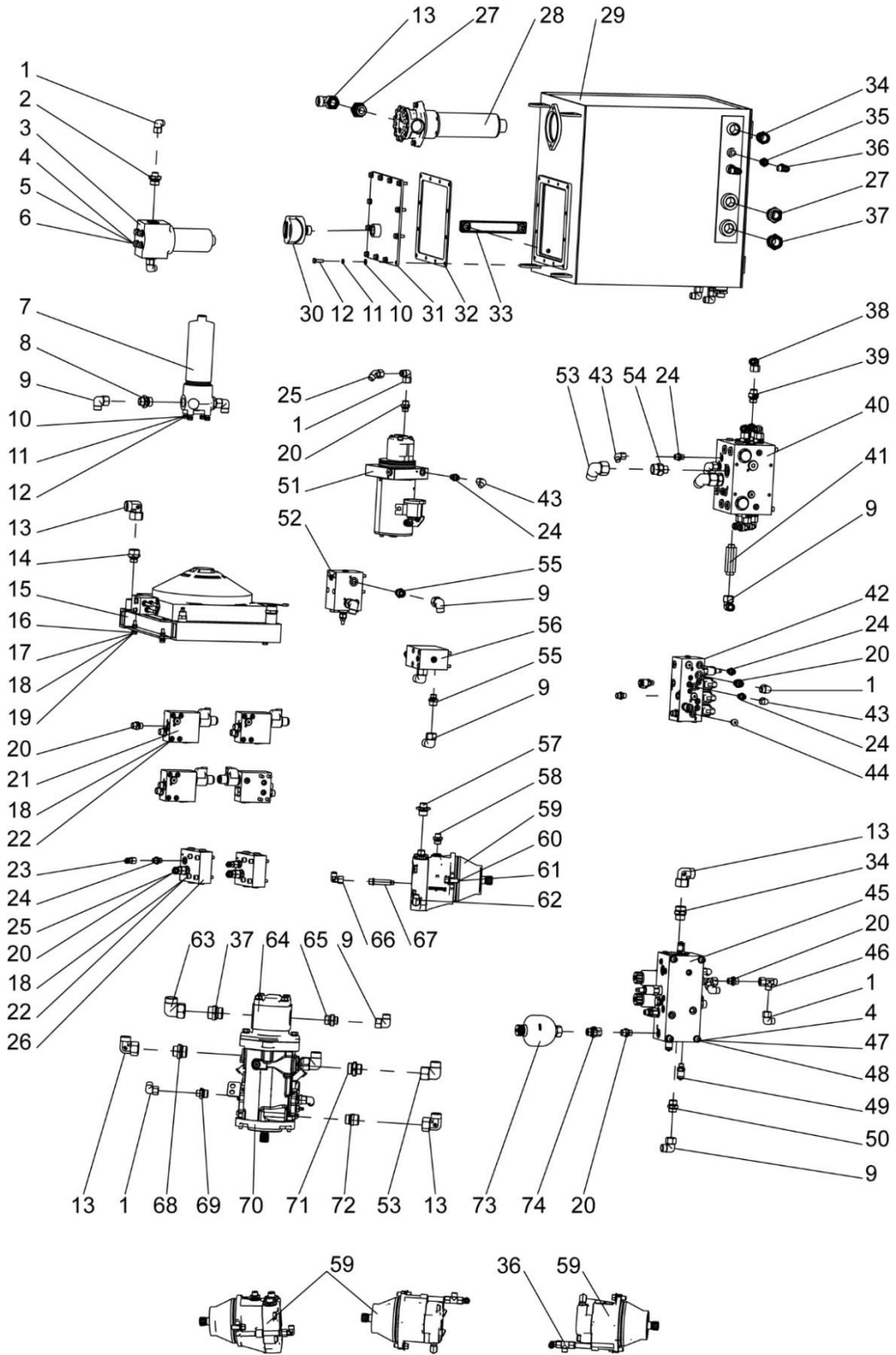


## ZS5390RT Hydraulic System

NO.	Material No.	Item and Spec	Units	Remark
31	00775805200230000	Cover assembly	1	
32	00775805200220000	Cover plate rubber pad	1	
33	1019901354	Liquid level thermometer	1	
34	1140101707	End straight coupling G3/4/M30×2	2	
35	1140101941	End straight coupling G3/8/M16×1.5	2	
36	1140101487	Three-way combination joint M16×1.5	4	
37	1140103362	End straight coupling G1/M36×2	2	
38	1140101482	Right angle built-up joint M20×1.5	8	
39	1140101524	End straight coupling G1/2/M20×1.5	8	
40	1010306021	travel split-flow valve	1	
41	1140114899	End straight coupling	1	
42	1019807527	Two-speed brake floating block	1	
43	1140101475	Right angle combination joint	3	
44	1019900975	Plug	2	
45	1010307006	Lift control valve	1	
46	1140111291	Three-way combination joint	2	
47	1040301502	Washer 10	4	GB/T93-1987
48	1040100059	Screw M10×20-8.8	4	GB/T70.1-2008
49	1140114187	Pressure joints	3	
50	1140101464	End straight coupling G1/2/M22×1.5	1	
51	1010001903	Auxiliary pump	1	
52	1010307007	Lifting cylinder balance valve	1	
53	1140101534	Right angle built-up joint M30×2	4	
54	1140101523	End straight coupling G3/4/M30×2	2	
55	1140101465	End straight coupling G3/8/M22×1.5	4	
56	1010307008	Lifting cylinder balance valve	1	
57	1140114627	End straight coupling	4	
58	1140112820	End straight coupling	2	
59	1010100908	Travel motor	2	
60	1040301503	Washer 12	4	GB/T93-1987

## ZS5390RT Hydraulic System

CHASSIS



## ZS5390RT Hydraulic System

NO.	Material No.	Item and Spec	Units	Remark
61	1040006277	Bolt M12×30-10.9	4	GB/T16674.1-2004
62	1140114622	Elbow adjustable directional joint	2	
63	1140101737	Right angle built-up joint M36×2	1	
64	1010001908	Gear pump	1	
65	1140114045	Hydraulic pipe joint M22×1.5-G3/4	1	
66	1140101476	Right angle built-up joint M16×1.5	2	
67	1140114623	End straight coupling	2	
68	1140112828	End straight coupling	1	
69	1140103421	End straight coupling	2	
70	1010002352	Closed pump	1	
71	1140111770	End straight coupling	1	
72	1140105936	End straight coupling	1	
73	1010800165	Accumulator	1	
74	1140103016	End straight combination coupling	1	



# **ZOOMLION**

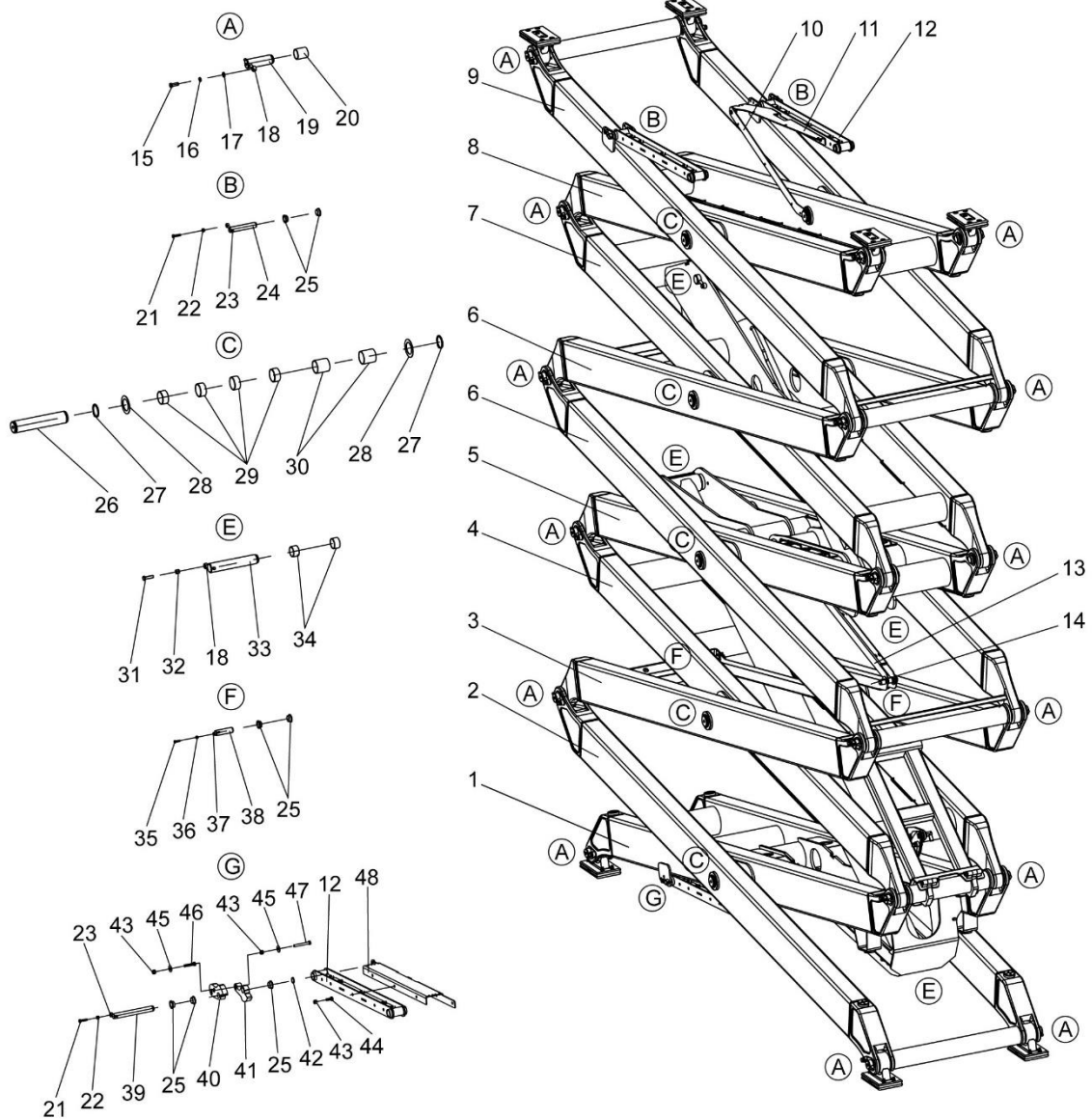
## **Parts Manual**

### **Section 3 Scissor Arm**



## ZS5390RT Scissor Arm Pin

SCISSOR ARM

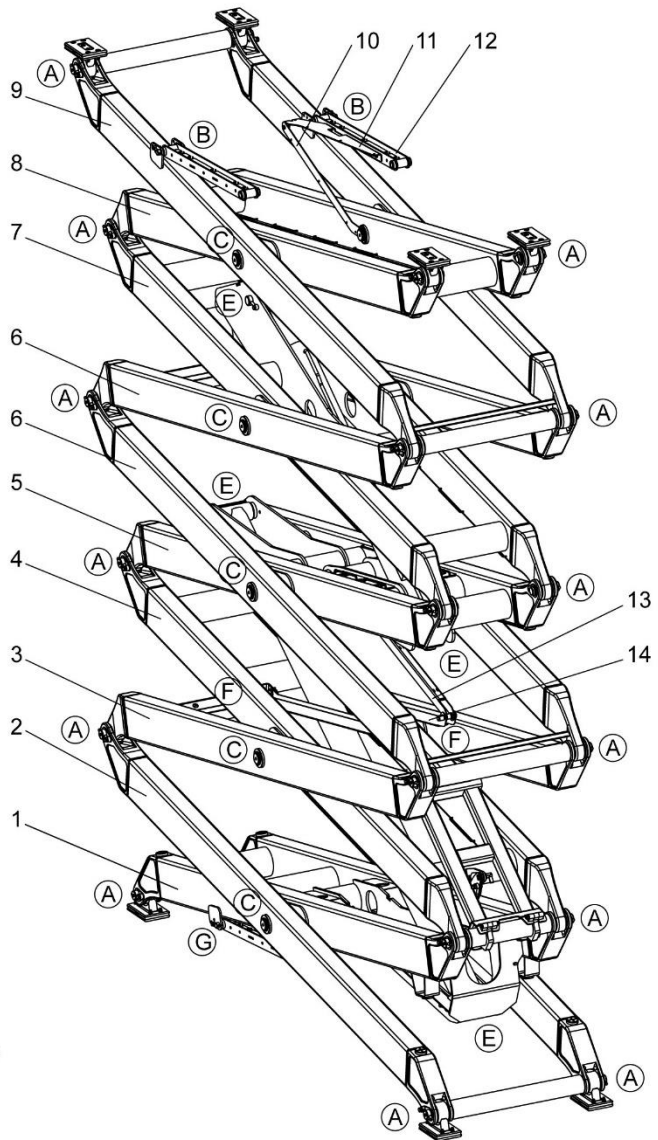
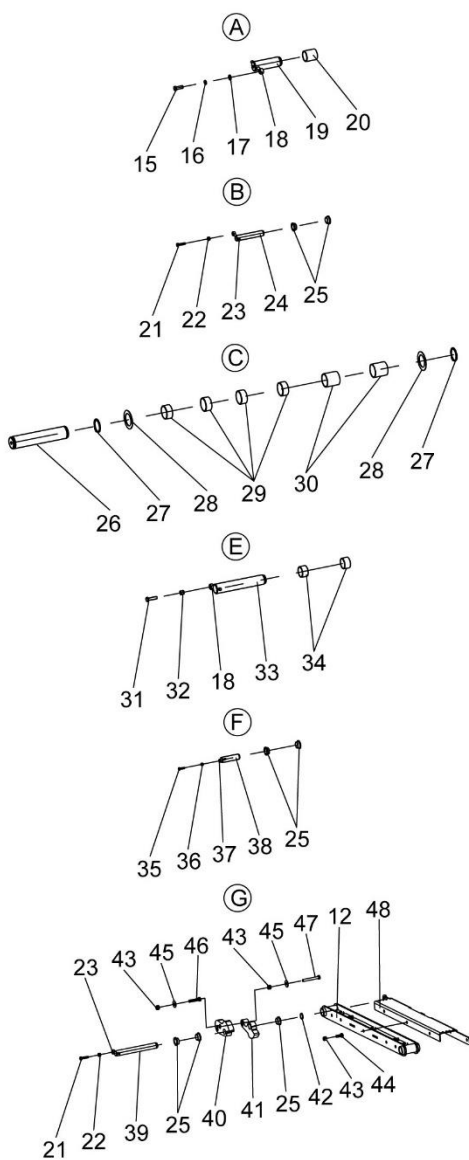


## ZS5390RT Series Scissor Arm Pin

NO.	Material No.	Item and Spec	Units	Remark
1	00775800300400000	Internal scissor arm I	1	
2	00775800300200000	External scissor arm I	1	
3	00775800300600000	External scissor arm II	1	
4	00775800300800000	Internal scissor arm II	1	
5	00775800301200000	Internal scissor arm III	1	
6	00775800301000000	External scissor arm III	2	
7	00775800301400000	Internal scissor arm IV	1	
8	00775800301800000	Internal scissor arm V	1	
9	00775800301600000	External scissor arm V	1	
10	00775800300001180	Slot IV	1	
11	00775800300001170	Slot III	1	
12	00775800302200000	Link	4	
13	00775800303000000	Slot II Weld	2	
14	00775800302800000	Slot I Weld	2	
15	1040003970	Bolt 1/2-13UNC-35-8.8	24	GB/T5783-2000
16	1040300054	Washer 12	24	GB/T93-1987
17	1040300526	Washer 12	24	GB/T97.1-2002
18	00773400200001070	Stop pin	28	
19	00775800300001010	Axle I	24	
20	1054400367	Composite bush	24	
21	1040000689	Bolt M8×35-8.8	4	GB/T5782-2000
22	1040200503	Nut M8-8	4	GB/T889.1-2000
23	00775800300001210	Stop pin	4	
24	00775800300001050	Short connecting rod axle	3	
25	1054400313	Composite bush	29	

## ZS5390RT Scissor Arm Pin

SCISSOR ARM



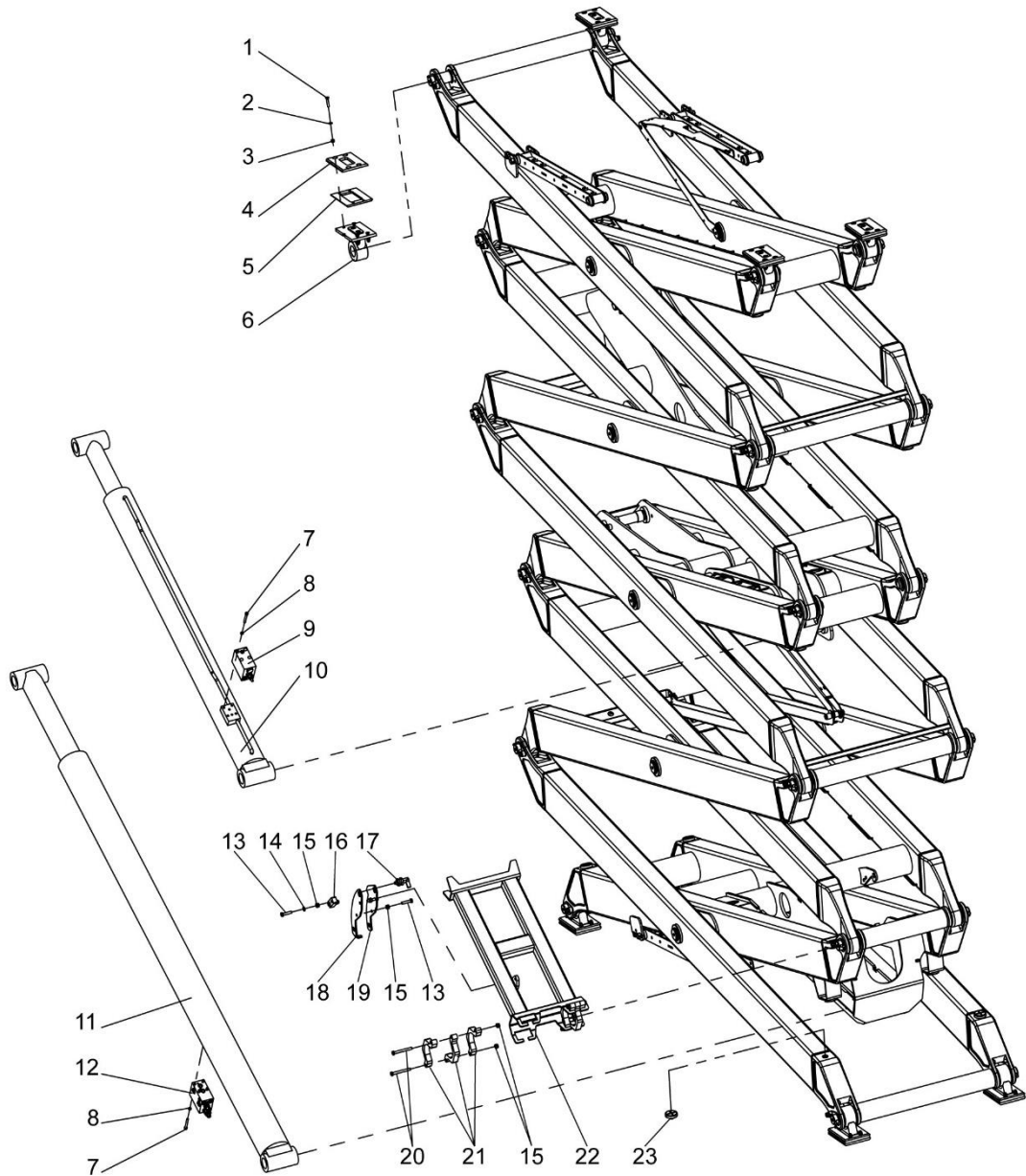


## ZS5390RT Scissor Arm Pin

NO.	Material No.	Item and Spec	Units	Remark
26	00775800300001240	Axle II	10	
27	1040303158	Retaining ring 58	20	
28	00775800300001230	Gasket	19	
29	1054400315	Composite bush	40	
30	00775800300001080	Spacer	20	
31	1040000067	Bolt M12×45-8.8	4	GB/T5782-2000
32	1040200507	Nut M12-8	4	GB/T889.1-2000
33	00775800300001030	Axle III	4	
34	1054400363	Composite bush	8	
35	1040000076	Bolt M6×25-8.8	6	GB/T5783-2000
36	1040200506	Nut M6-8	6	GB/T889.1-2000
37	00775800100001140	Stop pin	6	
38	00775800300001060	Slot coupling shaft	6	
39	00775800300001040	Long linkage axle	1	
40	00775800300001160	Limit block I	1	
41	00775800300001220	Limit block II	1	
42	1040300154	Bearing 25	1	GB/T894.1-1986
43	1040200504	Nut M10-8	16	GB/T889.1-2000
44	1040000114	Bolt M10×25-8.8	6	GB/T5783-2000
45	1040300027	Washer 10	2	GB/T96.1-2002
46	1040000068	Bolt M10×50-8.8	1	GB/T5782-2000
47	1040000025	Bolt M10×80-8.8	1	GB/T5782-2000
48	00775800300001150	Limit sensor bracket	1	

## ZS5390RT Scissor Arm Accessory

SCISSOR ARM



## ZS5390RT Series Scissor Arm Accessory

NO.	Material No.	Item and Spec	Units	Remark
1	1040103310	Bolt M8×45-8.8	32	GB/T70.3-2000
2	1040300066	Washer 8	32	GB/T97.1-2002
3	1040200503	Nut M8-8	32	GB/T889.1-2000
4	00775800302001010	Lower sliding block	8	
5	00775800302001020	Upper sliding block	8	
6	00775800302100000	Lower sliding connecting seat	8	
7	1040100024	Screw M8×65-8.8	8	GB/T70.1-2000
8	1040300063	Washer 8	8	GB/T93-1987
9	1010307007	Lift cylinder balance valve	1	
10	1010201639	Upper lift cylinder	1	
11	1010201638	Lower lift cylinder	1	
12	1010307008	Lift cylinder balance valve	1	
13	1040001283	Bolt M10×45-8.8	4	GB/T5782-2000
14	1040300061	Washer 10	3	GB/T97.1-2002
15	1040200504	Nut M10-8	16	GB/T889.1-2000
16	00775800300001100	Safety arm block	1	
17	1100400030	Swing gate pin	1	
18	00775800300001090	Arcuate connecting plate of safety arm	1	
19	00775800300001110	Arcuate stop block of safety arm	1	
20	1040000117	Bolt M10×90-8.8	4	GB/T5782-2000
21	00775800300001070	Safety arm fastening block	6	
22	00775800302400000	Safety arm	1	
23	00775800300001190	Cushion	18	



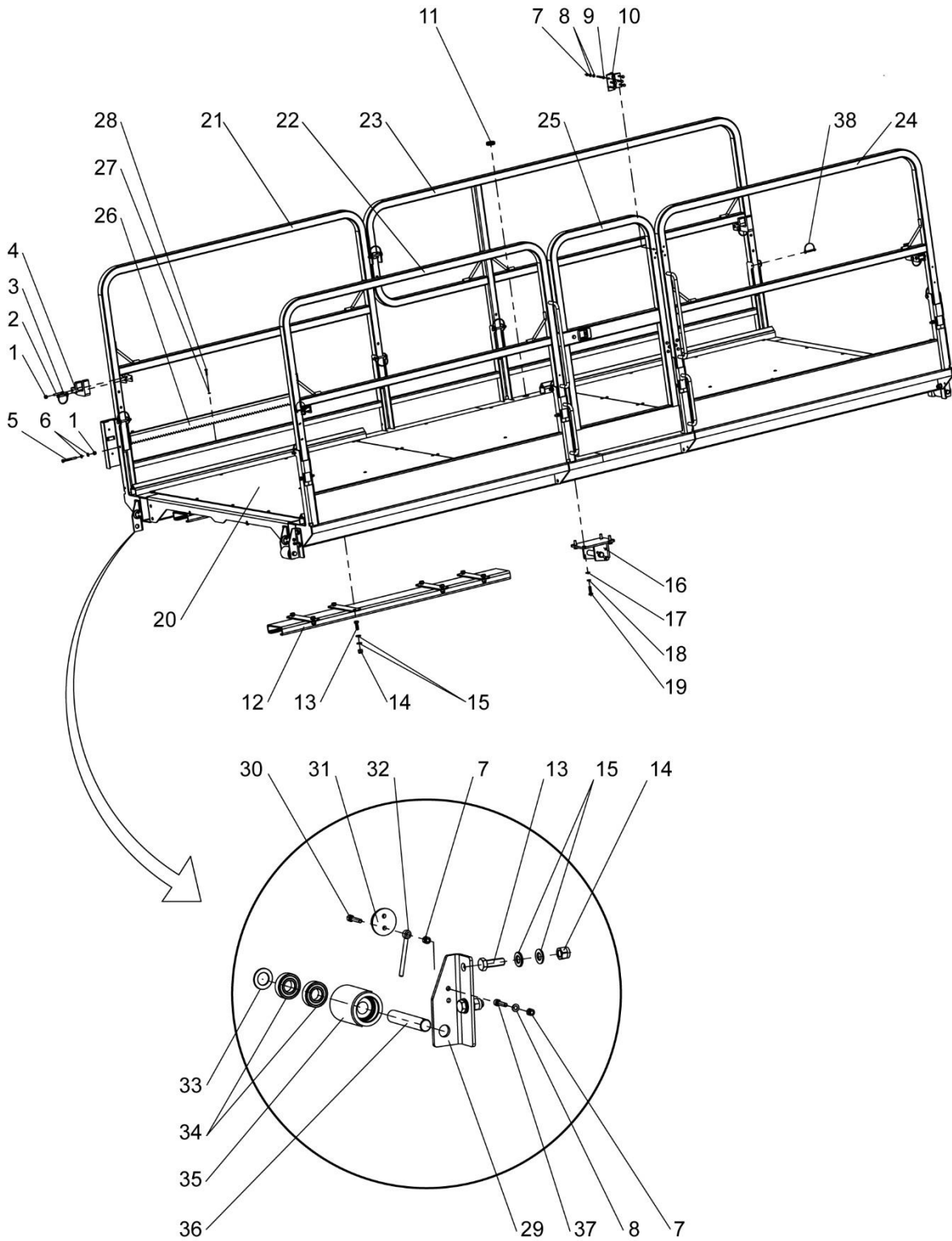
# **ZOOMLION**

**Parts Manual**

**Section 4 Work Platform**



## ZS5390RT Platform

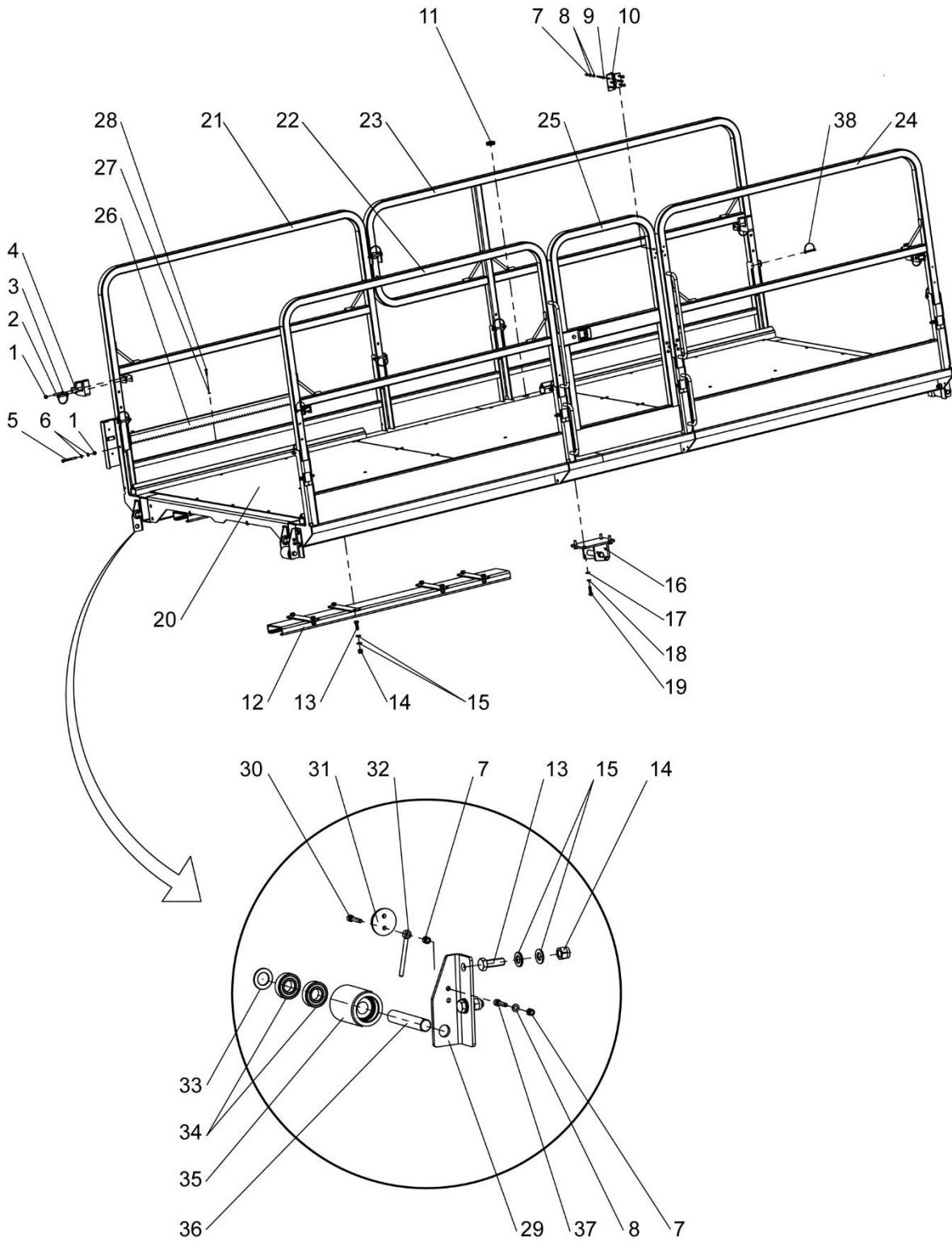


WORK PLATFORMA

## ZS5390RT Platform

NO.	Material No.	Item and Spec	Units	Remark
1	1040200503	Nut M8-8	31	GB/T889.1-2000
2	1040000649	Bolt M8×50-8.8	4	GB/T5782-2000
3	1040502050	D pin 8×53	4	
4	00775800100001170	Limit block	4	
5	1040000464	Bolt M8×75-8.8	8	GB/T5782-2000
6	1040300066	Washer 8	36	GB/T97.1-2002
7	1040200506	Nut M6-8	36	GB/T889.1-2000
8	1040300051	Washer 6	44	GB/T97.1-2002
9	1040000700	Bolt M6×60-8.8	12	GB/T5783-2000
10	1101000163	Spring hinge	2	
11	00775602800001180	Coil II	2	
12	00775800103000000	Upper slide rail	4	
13	1040001179	Bolt M12×35-8.8	48	GB/T5782-2000
14	1040200507	Nut M12-8	48	GB/T889.1-2000
15	1040300526	Washer 12	96	GB/T97.1-2002
16	00775800103400000	Linkage bracket of scissor arm	2	
17	1040300061	Washer 10	8	GB/T97.1-2002
18	1040300067	Washer 10	8	GB/T93-1987
19	1040001595	Bolt M10×35-8.8	8	GB/T5783-2000
20	00775800100200000	Lower components	1	

## ZS5390RT Platform

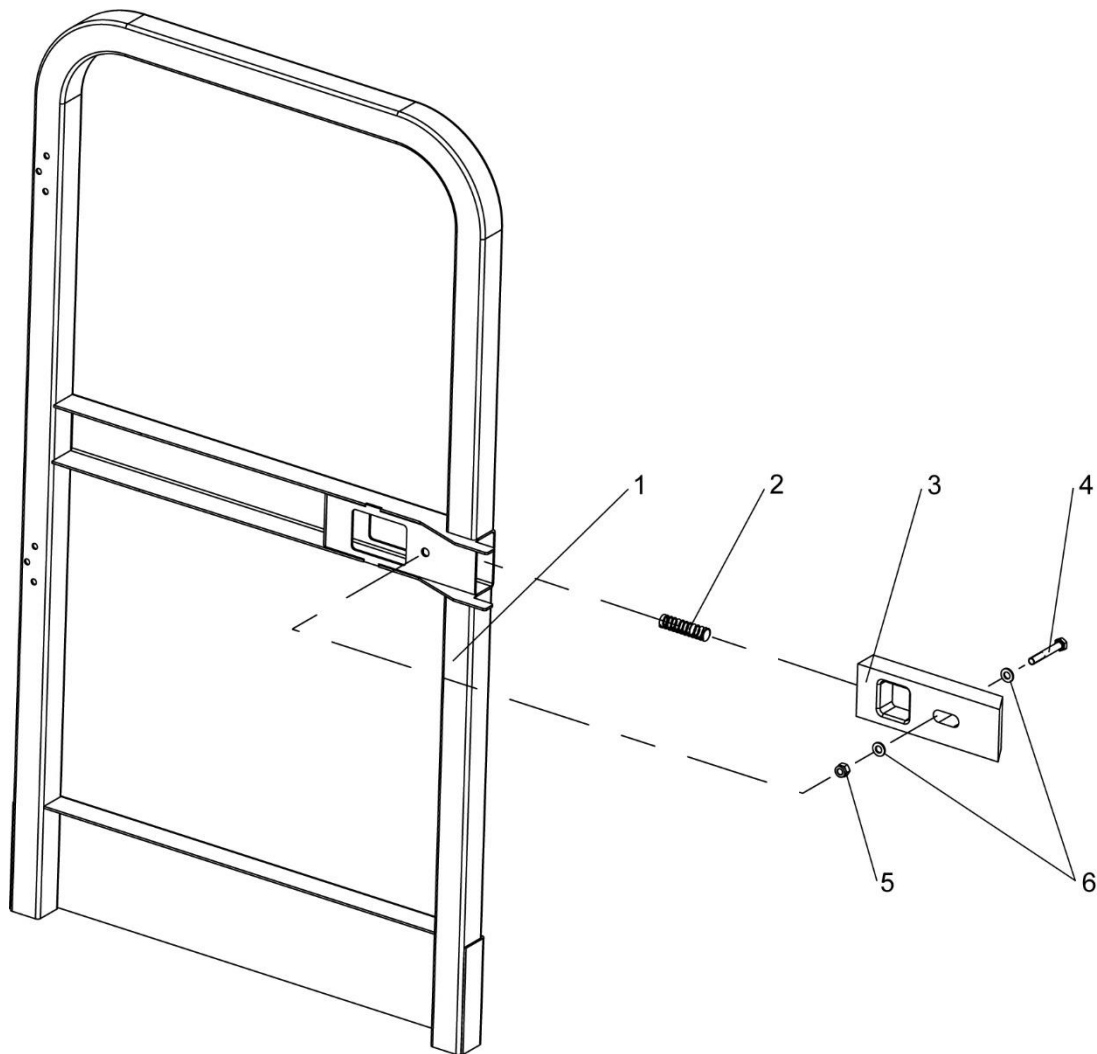




## ZS5390RT Platform

NO.	Material No.	Item and Spec	Units	Remark
21	00775800104600000	Guard rails IV	1	
22	00775800104000000	Guard rails I	1	
23	00775800104400000	Guard rails III	1	
24	00775800104200000	Guard rails II	1	
25	00775800104800000	Platform gate	1	
26	00775800105000000	Bending rack	2	
27	1040300062	Washer 6	8	GB/T93-1987
28	1040000076	Bolt M6×25-8.8	8	GB/T5783-2000
29	00775800100001050	Trolley mounting plate I	4	
30	1040100237	Screw M6×30-8.8	4	GB/T70.1-2000
31	00775800100001130	Nylon block	8	
32	00775800100001140	Stop pin	4	
33	00775800100001200	Gasket I	6	
34	1052500006	Bearing 6004-2RS	8	GB/T 276-1994
35	00775800100001070	Trolley III	4	
36	00775800100001080	Pin II	4	
37	1040100105	Screw M6×25-8.8	12	GB/T70.1-2000
38	1040502051	D pin 8×70	9	

## ZS5390RT Platform Gate

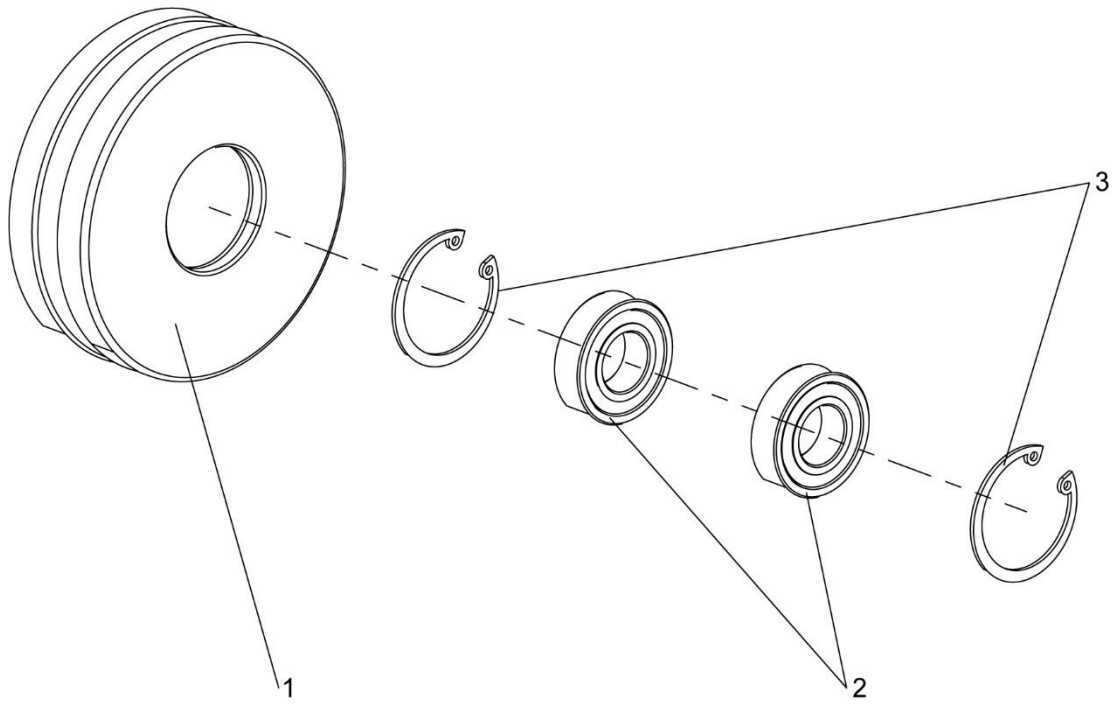


WORK PLATFORMA

**ZS5390RT Platform Gate**

<b>NO.</b>	<b>Material No.</b>	<b>Item and Spec</b>	<b>Units</b>	<b>Remark</b>
1	00775800104810000	Platform Gate Weldment	1	
2	00775600101801020	Spring	1	
3	00775600101801010	Key cylinder	1	
4	1040000469	Bolt M8×55	1	GB/T5783-2000
5	1040200503	Nut M8-8	1	GB/T889.1-2000
6	1040300066	Washer 8	2	GB/T97.1-2002

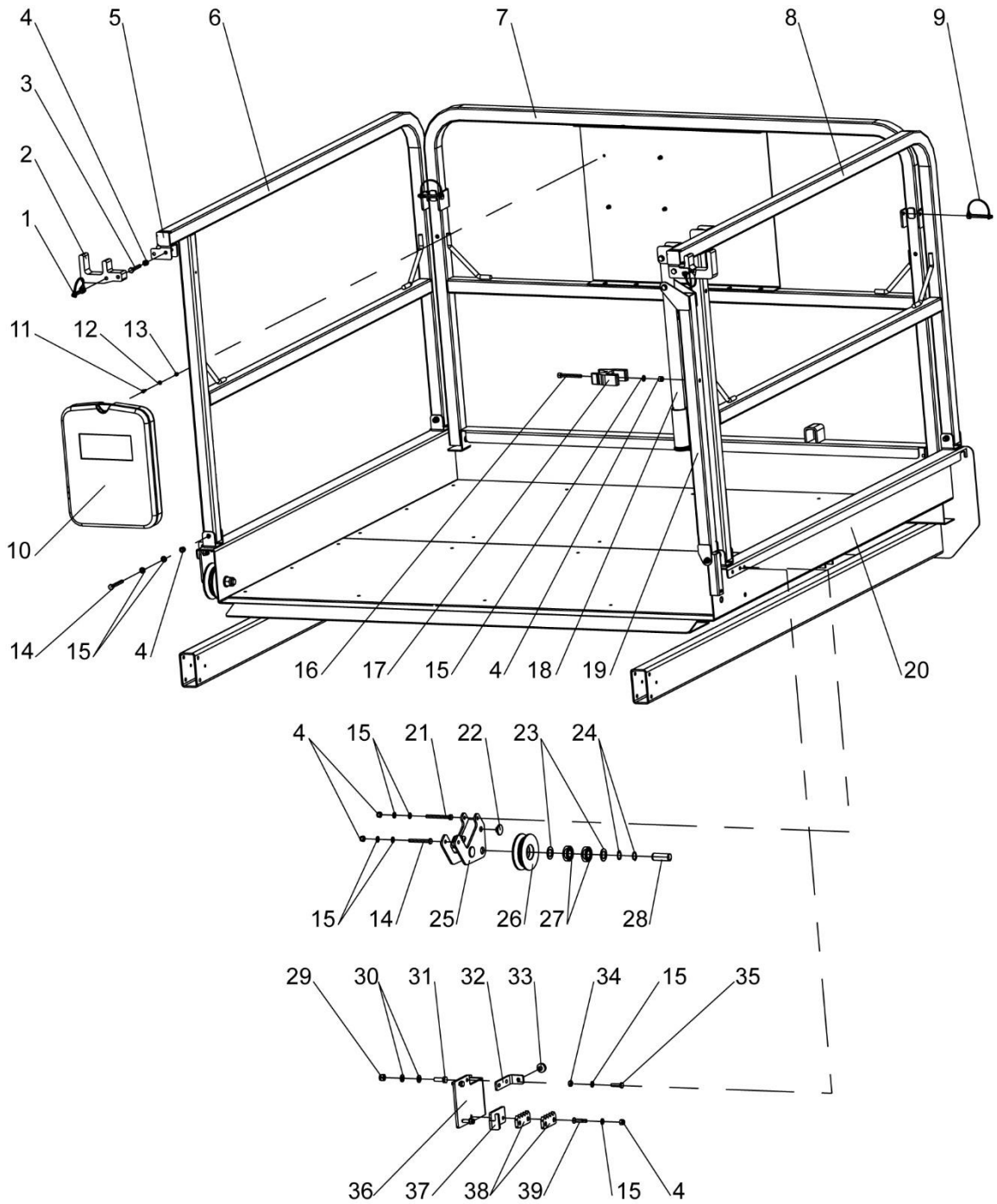
**ZS5390RT Platform Pulley**



**ZS5390RT Platform Pulley**

NO.	Material No.	Item and Spec	Units	Remark
1	00775800103601010	Roller II	1	
2	1052500006	Bearing 6004-2RS	2	GB/T 276-1994
3	1040300002	Bearing 42	2	GB/T893.1-1986

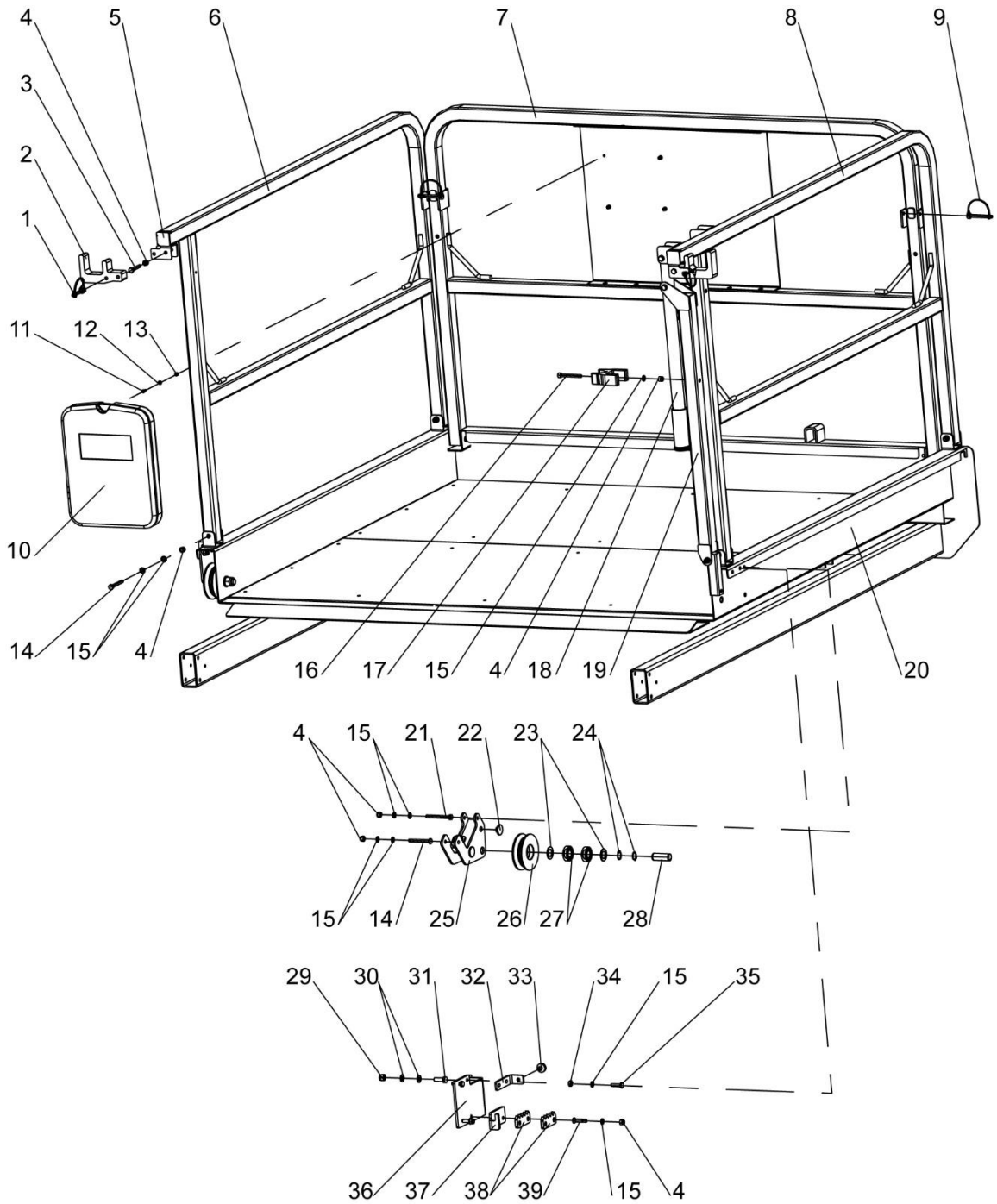
## ZS5390RT Extension Deck



## ZS5390RT Extension Deck

NO.	Material No.	Item and Spec	Units	Remark
1	1040502050	D pin 8×53	2	
2	00775800100001170	Limit block	2	
3	1040000649	Bolt M8×50-8.8	2	GB/T5782-2000
4	1040200503	Nut M8-8	17	GB/T889.1-2000
5	00775800100001190	Square plug	2	
6	00775800101800000	Guard rails II	1	
7	00775800102000000	Guard rails III	1	
8	00775800101600000	Guard rails I	1	
9	1040502051	D pin 8×70	2	
10	1999904986	Storage box	1	
11	1040102341	Screw M5×12-8.8	4	GB/T70.1-2000
12	1040300048	Washer 5	4	GB/T97.1-2002
13	1040200867	Nut M5-8	4	GB/T889.1-2000
14	1040000137	Bolt M8×65-8.8	9	GB/T5782-2000
15	1040300066	Washer 8	31	GB/T97.1-2002
16	1040100024	Screw M8×65-8.8	1	GB/T70.1-2000
17	00775800100001030	Clamp	1	
18	00775800102400000	Tension grip	1	
19	00775800102800000	Tie rod	1	
20	00775800100400000	Lower components	1	

## ZS5390RT Extension Deck





## ZS5390RT Extension Deck

NO.	Material No.	Item and Spec	Units	Remark
21	1040000464	Bolt M8×75-8.8	3	GB/T5782-2000
22	00775800102601030	Nylon spacer	5	
23	00775800100001200	Gasket I	2	
24	1040300167	Washer 20	2	GB/T894.1-1986
25	00775800102610000	Trolley bracket weldment	1	
26	00775800102601020	Trolley I	2	
27	1052500006	Bearing 6004-2RS	4	GB/T 276-1994
28	00775800102601040	Pin III	1	
29	1040200504	Nut M10-8	2	GB/T889.1-2000
30	1040300061	Washer 10	4	GB/T97.1-2002
31	1040001680	Bolt M10×30-8.8	2	GB/T5783-2016
32	00775800100001090	Side guard of extension deck	2	
33	00775800100001110	Rubber spacer	4	
34	1040201674	Nut M8-8	2	GB/T13681-1992
35	1040000018	Bolt M8×30-8.8	4	GB/T5783-2000
36	00775800103801020	Bending plate I	1	
37	00775800103801030	Bending plate II	1	
38	00775800103801010	Tooth block	2	
39	1040102717	Screw M8×40-8.8	2	GB/T70.3-2000



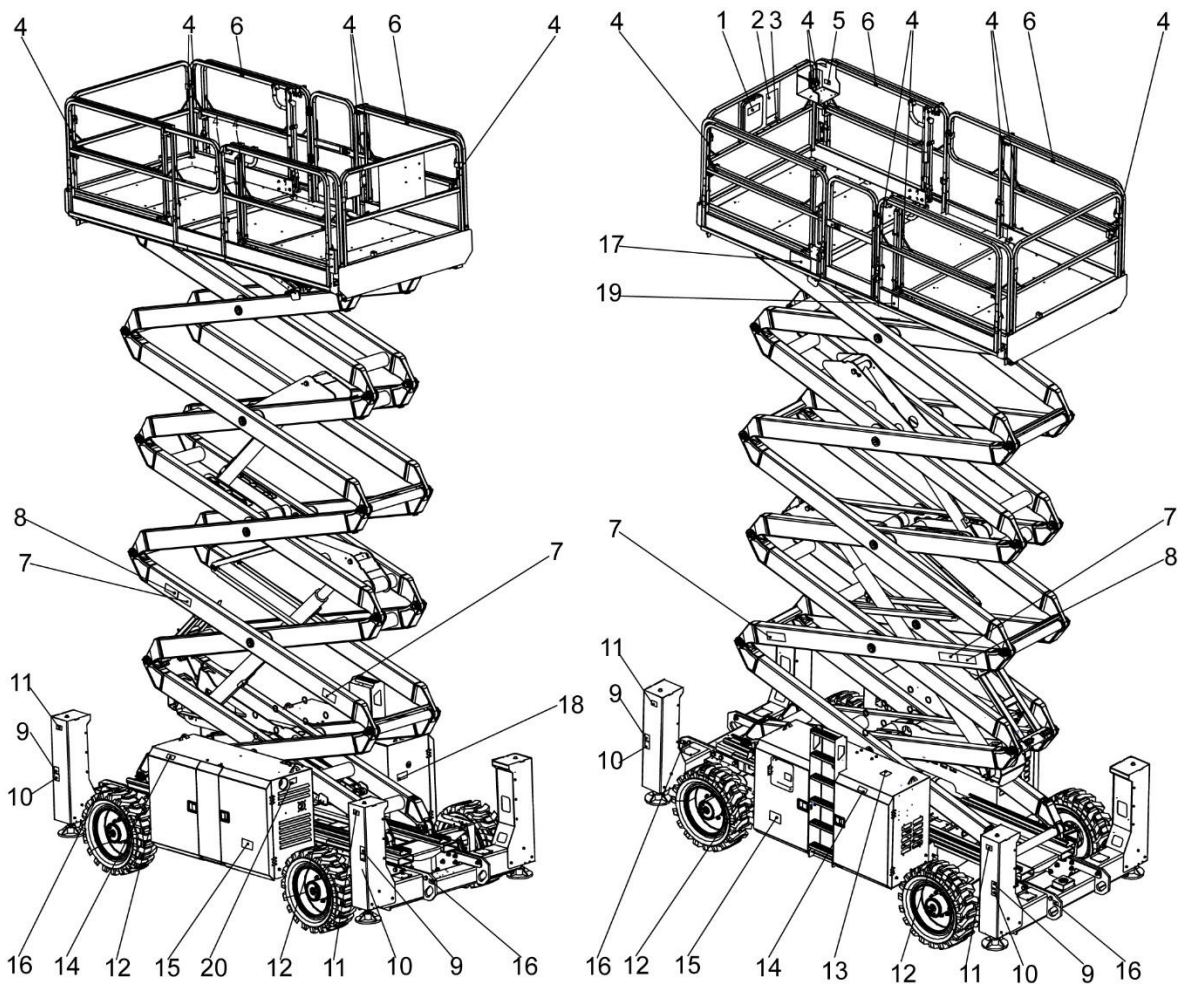
# **ZOOMLION**

**Parts Manual**

**Section 5 Decal**



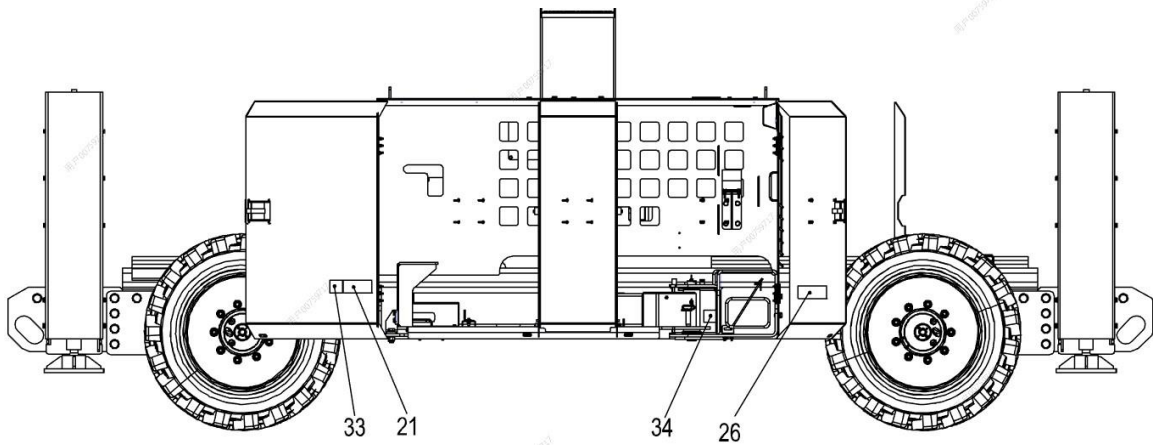
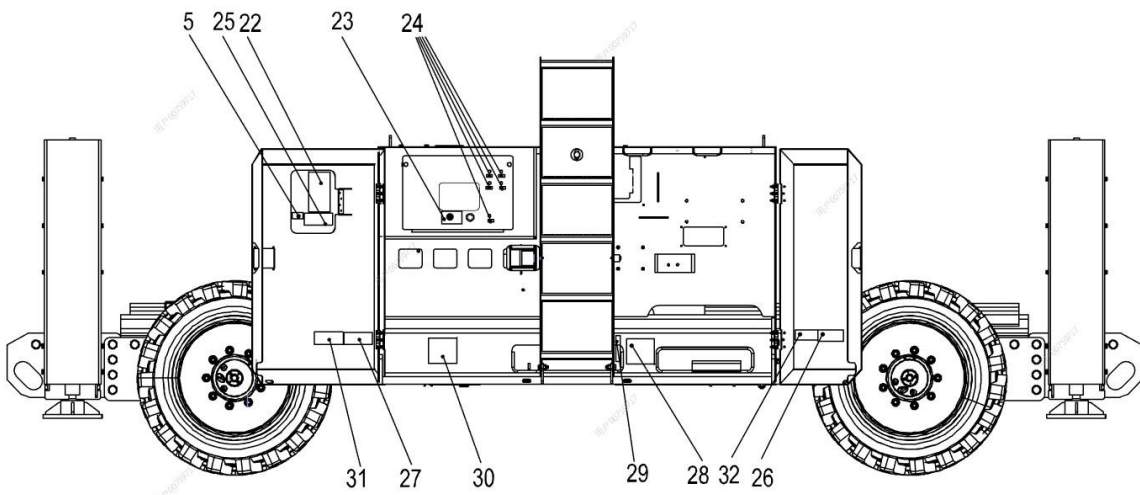
## ZS5390RT Series Decal Installation



## ZS5390RT Series Decal Installation

NO.	Material No.	Item and Spec	Units	Remark
1	00775307080402040	Label- Store the Operation and Safety Manual	1	
2	00775307010402010	Label- Safety Rules	1	
3	00775207010403070	Danger- Tip-over Hazard	1	
4	00775307080202090	Label- Lanyard Anchorage Point	16	
5	00775307080402030	Label- Read the Instructions	2	
6	00775807010401100	Danger- Crushing Hazard、Guardrail	4	
7	00775307040401040	Danger- Crushing Hazard	4	
8	00775307040401050	Label- Safety Arm	2	
9	00775807010201080	Label-Stay Away From Outriggers	4	
10	00775807010201070	Label-Outriggers Load	4	
11	00775807010201120	Label-Heading	4	
12	00775807010401140	Label- Wheels Load	4	
13	00775807010201170	Forbidden Trample	1	
14	00775807010401110	Label-Maintenance of Compartment	2	
15	00775807000201160	Label-4×4	2	
16	00775307080202010	Label- Tie-down and Lifting	4	
17	00775807010201130	Label-Rated Load	1	
18	00775307080402120	Danger- Crushing Hazard	1	
19	00775307080402170	Label- Max Manual Force	1	
20	00775307080402110	Main Power Switch	1	

## ZS5390RT Series Decal Installation



## ZS5390RT Series Decal Installation

NO.	Material No.	Item and Spec	Units	Remark
21	00775807010401060	Danger-Scalding	1	
22	00775307080402130	Pre-operation Inspection	1	
23	00775807000201060	Label-Key Switch	1	
24	00775807000201170	Label-Insurance	5	
25	00775807000401200	Label-Low Temperature Start	1	
26	00775807010401040	Forbidden on Water	2	
27	00775807010401190	Danger- Explosion HazardI	1	
28	00775807010401030	Hydraulic Oil Tank	1	
29	00775407000201110	Label-Liquid Level	1	
30	00775807010401010	Diesel Tank	1	
31	00775807010201020	Fill up as Instructed	1	
32	00775307080402060	Danger- Explosion and Fire Hazard	1	
33	00775807010401160	Forbidden Touch	1	
34	00775807010401050	Disconnecting Battery	1	





# Self-Propelled Rough-Terrain Scissor Lifts Parts Manual

**ZOOMLION INTELLIGENT ACCESS MACHINERY CO.,LTD.**

Add:Tengfei Road 997 , Wangcheng District, Changsha, Hunan,PRC

Zip Code:410200

E-mail:awm@zoomlion.com

Tel:400-800-0157



**ZOOMLION**